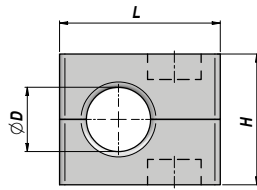
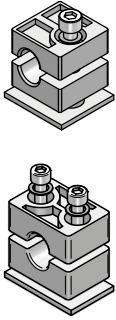




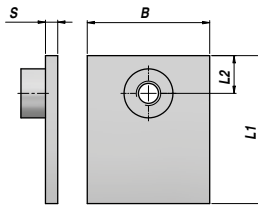
ADS

NEW!

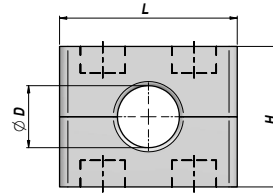
COLLARE FERMATUBO - SERIE STANDARD (POLIPROPILENE)  
CLAMP - STANDARD SERIES (POLYPROPYLENE)



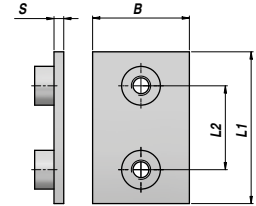
C1



P1



C2-C8



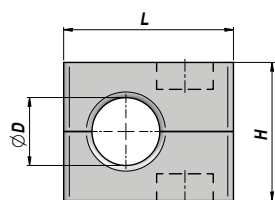
P2-P8

CORPO COLLARE CLAMP BODY						PIASTRA A SALDARE WELD PLATE						VITE TC-EI SOCKET CAP SCREW ISO 4762			RONDELLA WASHER			
Codice Code	Tipo Type	ØD mm	L	H	kg x100	Codice Code	Tipo Type	L1	L2	B	S	kg x100	Codice Code	Tipo Type	Size	Codice Code	Tipo Type	Pz. Pcs
ADSPPC1006		6.0			1,31													
ADSPPC1064		6.4			1,32													
ADSPPC1008		8.0			1,27													
ADSPPC1095	C1	9.5	28	27	1,25	ADP1000000	P1	31.5	10	30	3	2,61	ADVTC02000	TCEI1	1 x M6x20	ADSRP06000	RP	1
ADSPPC1010		10.0			1,20													
ADSPPC1012		12.0			1,11													
ADSPPC1127		12.7			1,08													
ADSPPC2006		6.0			1,73													
ADSPPC2064		6.4			1,68													
ADSPPC2008		8.0			1,65													
ADSPPC2095	C2	9.5	37	27	1,60	ADP2000000	P2	36	20	30	3	3,21	ADVTC02000	TCEI2	2 x M6x20	ADSRP06000	RP	2
ADSPPC2010		10.0			1,57													
ADSPPC2012		12.0			1,48													
ADSPPC2127		12.7			1,48													
ADSPPC3127		12.7			2,49													
ADSPPC3135		13.5			2,16													
ADSPPC3014		14.0			2,10													
ADSPPC3015	C3	15.0	42	33	2,04	ADP3000000	P3	42	26	30	3	3,58	ADVTC03000	TCEI3	2 x M6x25	ADSRP06000	RP	2
ADSPPC3016		16.0			1,97													
ADSPPC3172		17.2			1,91													
ADSPPC3018		18.0			1,86													
ADSPPC4019		19.0			2,96													
ADSPPC4020		20.0			2,86													
ADSPPC4213		21.3			2,76													
ADSPPC4022	C4	22.0	50	36	2,74	ADP4000000	P4	50	33	30	3	4,47	ADVTC04000	TCEI4	2 x M6x30	ADSRP06000	RP	2
ADSPPC4023		23.0			2,63													
ADSPPC4025		25.0			2,44													
ADSPPC4254		25.4			2,40													
ADSPPC5269		26.9			3,33													
ADSPPC5028		28.0			3,21													
ADSPPC5029	C5	29.0	57	42	3,14	ADP5000000	P5	60	40	30	3	4,83	ADVTC05000	TCEI5	2 x M6x35	ADSRP06000	RP	2
ADSPPC5030		30.0			3,00													
ADSPPC5032		32.0			2,82													

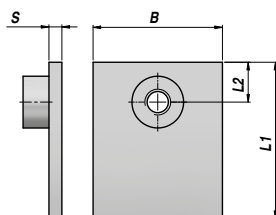
COLLARE FERMATUBO - SERIE STANDARD (POLIPROPILENE)  
CLAMP - STANDARD SERIES (POLYPROPYLENE)

NEW!

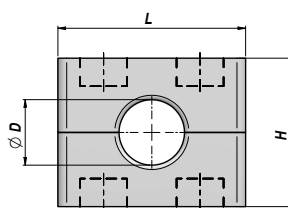
ADS



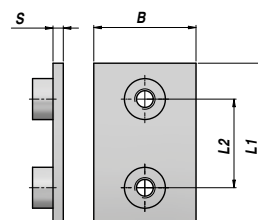
C1



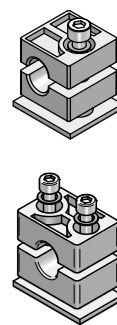
P1



C2-C8



P2-P8



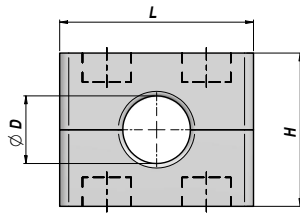
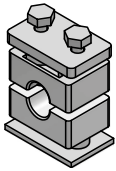
CORPO COLLARE CLAMP BODY						PIASTRA A SALDARE WELD PLATE						VITE TC-EI SOCKET CAP SCREW ISO 4762			RONDELLA WASHER			
Codice Code	Tipo Type	ØD mm	L	H	kg x100	Codice Code	Tipo Type	L1	L2	B	S	kg x100	Codice Code	Tipo Type	Size	Codice Code	Tipo Type	Pz. Pcs
ADSPPC6032		32.0			6,23													
ADSPPC6337		33.7			6,03													
ADSPPC6035		35.0			5,70													
ADSPPC6038	C6	38.0	71	58	5,41	ADP6000000	P6	71	52	30	3	5,62	ADVTC06000	TCEI6	2 x M6x50	ADSRP06000	RP	2
ADSPPC6040		40.0			5,01													
ADSPPC6042		42.4			4,82													
ADSPPC6045		45.0			4,24													
ADSPPC7445		44.5			7,70													
ADSPPC7045		45.0			7,68													
ADSPPC7483		48.3			7,28													
ADSPPC7050	C7	50.0	86	66	6,70	ADP7000000	P7	88	66	30	3	7,00	ADVTC07000	TCEI7	2 x M6x60	ADSRP06000	RP	2
ADSPPC7508		50.8			6,57													
ADSPPC7053		53.0			6,26													
ADSPPC7054		54.0			6,05													
ADSPPC8572		57.2			15,36													
ADSPPC8603		60.3			14,75													
ADSPPC8635		63.5			14,45													
ADSPPC8066	C8	66.0	121	93	13,96	ADP8000000	P8	122	94	30	5	14,84	ADVTC08000	TCEI8	2 x M6x90	ADSRP06000	RP	2
ADSPPC8070		70.0			13,50													
ADSPPC8073		73.0			13,05													
ADSPPC8761		76.1			12,44													

MATERIALE CORPO COLLARE : POLIPROPILENE - MATERIALE PIASTRA : ACCIAIO ZINCATO - MATERIALE VITI E RONDELLE : ACCIAIO 8.8  
CLAMP BODY MATERIAL : POLYPROPYLENE - PLATE MATERIAL : ZINC PLATED STEEL - SCREW AND WASHER MATERIAL : STEEL 8.8

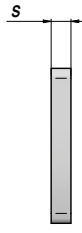
**ADSCP**

**NEW!**

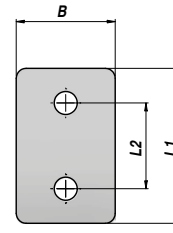
COLLARE FERMATUBO - SERIE PESANTE (POLIPROPILENE)  
CLAMP - HEAVY SERIES (POLYPROPYLENE)



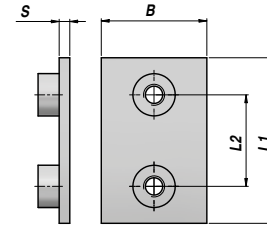
**CP1-5**



**P CP1-5**



**PS CP1-5**

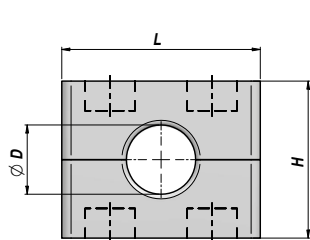
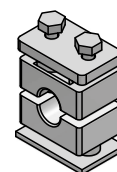


CORPO COLLARE CLAMP BODY						PIASTRA A SALDARE WELD PLATE						PIASTRA SUPERIORE UPPER PLATE						VITE TE-CP HEXAGON HEAD BOLT ISO 4014 / 4017				
Codice Code	Tipo Type	ØD mm	L	H	kg x100	Codice Code	Tipo Type	L1	L2	B	S	kg x100	Codice Code	Tipo Type	L1	L2	B	S	kg x100	Codice Code	Tipo Type	Size
ADSPPCP01006		6.0			3,00	ADPCP0100000	P CP1	74	33	30	8	14,80	ADPSCP010000	PS CP1	56	33	30	8	9,22	ADVTECP01000	TE CP1	2 x M10x45
ADSPPCP01064		6.4			2,99																	
ADSPPCP01008		8.0			2,88																	
ADSPPCP01095		9.5			2,91																	
ADSPPCP01010		10.0			2,90																	
ADSPPCP01012		12.0			2,84																	
ADSPPCP01127		12.7			2,92																	
ADSPPCP01135	CP1	13.5	57	33	2,81																	
ADSPPCP01014		14.0			2,76																	
ADSPPCP01015		15.0			2,75																	
ADSPPCP01016		16.0			2,71																	
ADSPPCP01172		17.2			2,72																	
ADSPPCP01018		18.0			2,65																	
ADSPPCP01019		19.0			2,64																	
ADSPPCP01020		20.0			2,56																	
ADSPPCP02019		19.0			5,73	ADPCP0200000	P CP2	86	45	30	8	17,19	ADPSCP020000	PS CP2	69	45	30	8	11,85	ADVTECP02000	TE CP2	2 x M10x60
ADSPPCP02020		20.0			5,65																	
ADSPPCP02213		21.3			5,58																	
ADSPPCP02022		22.0			5,44																	
ADSPPCP02025	CP2	25.0	69	49	5,27																	
ADSPPCP02254		25.4			5,24																	
ADSPPCP02269		26.9			5,36																	
ADSPPCP02028		28.0			5,19																	
ADSPPCP02030		30.0			4,95																	
ADSPPCP03030		30.0			7,80	ADPCP0300000	P CP3	100	60	30	8	19,75	ADPSCP030000	PS CP3	84	60	30	8	14,79	ADVTECP03000	TE CP3	2 x M10x70
ADSPPCP03032		32.0			7,59																	
ADSPPCP03337		33.7			7,49																	
ADSPPCP03035		35.0			7,46																	
ADSPPCP03036		36.0			7,28																	
ADSPPCP03038	CP3	38.0	84	60	7,17																	
ADSPPCP03040		40.0			6,87																	
ADSPPCP03042		42.4			6,78																	
ADSPPCP03043		43.0			6,45																	
ADSPPCP03045		45.0			6,38																	

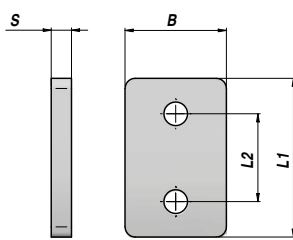
COLLARE FERMATUBO - SERIE PESANTE (POLIPROPILENE)  
CLAMP - HEAVY SERIES (POLYPROPYLENE)

NEW!

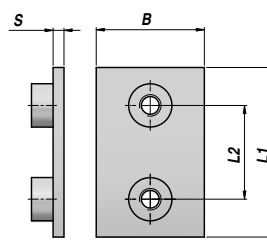
ADSCP



CP1-5



P CP1-5



PS CP1-5

CORPO COLLARE CLAMP BODY						PIASTRA A SALDARE WELD PLATE						PIASTRA SUPERIORE UPPER PLATE						VITE TE-CP HEXAGON HEAD BOLT ISO 4014 / 4017					
Codice Code	Tipo Type	ØD mm	L	H	kg x100	Codice Code	Tipo Type	L1	L2	B	S	kg x100	Codice Code	Tipo Type	L1	L2	B	S	kg x100	Codice Code	Tipo Type	Size	
ADSPPCP04337		33.7			23,47																		
ADSPPCP04038		38.0			21,15																		
ADSPPCP04040		40.0			20,80																		
ADSPPCP04424		42.4			20,45																		
ADSPPCP04445		44.5			22,42																		
ADSPPCP04045		45.0			20,00																		
ADSPPCP04483		48.3			19,06																		
ADSPPCP04050		50.0			19,00																		
ADSPPCP04508	CP4	50.8	116	88	19,00	ADPCP040000	P CP4	140	90	45	10	48,11	ADPSCP040000	PS CP4	115	90	45	10	37,62	ADVTECP04000	TE CP4	2 x M12x100	
ADSPPCP04053		53.0			18,50																		
ADSPPCP04054		54.0			18,47																		
ADSPPCP04055		55.0			18,20																		
ADSPPCP04056		56.0			18,15																		
ADSPPCP04572		57.2			17,96																		
ADSPPCP04060		60.3			17,33																		
ADSPPCP04635		63.5			16,57																		
ADSPPCP04065		65.0			16,20																		
ADSPPCP04070		70.0			14,97																		
ADSPPCP05603		60.3			42,61																		
ADSPPCP05065		65.0			41,85																		
ADSPPCP05066		66.0			42,02																		
ADSPPCP05070		70.0			40,12																		
ADSPPCP05073	CP5	73.0	155	118	40,24	ADPCP050000	P CP5	180	122	60	10	84,07	ADPSCP050000	PS CP5	152	122	60	10	64,87	ADVTECP05000	TE CP5	2 x M16x130	
ADSPPCP05761		76.1			39,80																		
ADSPPCP05080		80.0			37,85																		
ADSPPCP05085		85.0			36,70																		
ADSPPCP05889		88.9			35,24																		
ADSPPCP05090		90.0			34,80																		

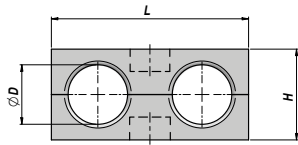
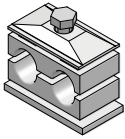
MATERIALE CORPO COLLARE : POLIPROPILENE - MATERIALE PIASTRA : ACCIAIO ZINCATO - MATERIALE VITI E RONDELLE : ACCIAIO 8.8  
CLAMP BODY MATERIAL : POLYPROPYLENE - PLATE MATERIAL : ZINC PLATED STEEL - SCREW AND WASHER MATERIAL : STEEL 8.8

# COLLARI FERMATUBO E RONDELLE BONDED - CLAMPS AND BONDED SEALS

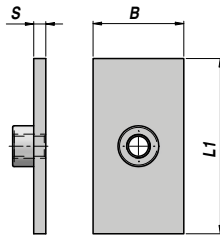
**ADD**

**NEW!**

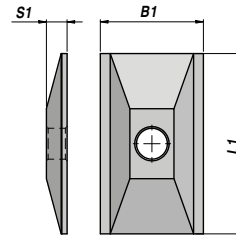
**COLLARE FERMATUBO - SERIE DOPPIA "CF" (POLIPROPILENE)  
CLAMP - "CF" DOUBLE SERIES (POLYPROPYLENE)**



**CF1-5**



**P CF1-5**



**PS CF1-5**

CORPO COLLARE CLAMP BODY						PIASTRA A SALDARE WELD PLATE					PIASTRA SUPERIORE UPPER PLATE					VITE TE HEXAGON HEAD BOLT ISO 4014 / 4017				
Codice Code	Tipo Type	ØD mm	L	H	kg x100	Codice Code	Tipo Type	L1	B	S	kg x100	Codice Code	Tipo Type	L1	B1	S1	kg x100	Codice Code	Tipo Type	Size
ADDCF10060		6.0			1,60	ADPCF01000	P CF1	37	30	3	2,94	ADPSCF1000	PS CF1	34.5	30	7	2,31	ADVTECF0100	TE CF1	1 x M6x35
ADDCF10064		6.4			1,62															
ADDCF10080		8.0			1,52															
ADDCF10095	CF1	9.5	36	27	1,59															
ADDCF10100		10.0			1,38															
ADDCF10120		12.0			1,22															
ADDCF10127		12.7			1,18															
ADDCF20127		12.7			2,13	ADPCF02000	P CF2	55	30	5	6,60	ADPSCF2000	PS CF2	52.0	30	7	3,52	ADVTECF0200	TE CF2	1 x M8x35
ADDCF20135		13.5			2,33															
ADDCF20140		14.0			2,03															
ADDCF20150	CF2	15.0	54	27	1,93															
ADDCF20160		16.0			1,78															
ADDCF20172		17.2			1,64															
ADDCF20180		18.0			1,54															
ADDCF30190		19.0			3,36	ADPCF03000	P CF3	70	30	5	8,33	ADPSCF3000	PS CF3	64.0	30	7	4,41	ADVTECF0300	TE CF3	1 x M8x45
ADDCF30200		20.0			3,18															
ADDCF30213		21.3			2,97															
ADDCF30220	CF3	22.0	67	37	2,84															
ADDCF30230		23.0			2,72															
ADDCF30250		25.0			2,33															
ADDCF30254		25.4			2,31															
ADDCF40260		26.0			4,54	ADPCF04000	P CF4	85	30	5	10,08	ADPSCF4000	PS CF4	79.0	30	7	5,45	ADVTECF0400	TE CF4	1 x M8x50
ADDCF40269	CF4	26.9			4,33															
ADDCF40280		28.0	81	42	4,03															
ADDCF40300		30.0			3,58															
ADDCF50320		32.0			7,53	ADPCF05000	P CF5	110	30	5	12,85	ADPSCF5000	PS CF5	102.5	30	7	7,16	ADVTECF0500	TE CF5	1 x M8x60
ADDCF50337		33.7			7,13															
ADDCF50350	CF5	35.0	106	53	6,85															
ADDCF50380		38.0			6,03															
ADDCF50400		40.0			5,58															
ADDCF50420		42.4																		

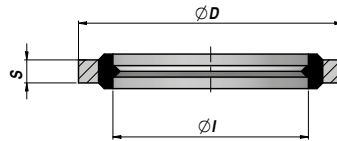
MATERIALE CORPO COLLARE : POLIPROPILENE - MATERIALE PIASTRE : ACCIAIO ZINCATO - MATERIALE VITI : ACCIAIO 8.8

CLAMP BODY MATERIAL : POLYPROPYLENE - PLATES MATERIAL : ZINC PLATED STEEL - SCREW MATERIAL : STEEL 8.8

**RONDELLA BONDED AUTOCENTRANTE  
SELF-CENTERING BONDED SEALS**

**NEW!**

**GAB**



Codice Code	Per filetto For thread BSP	ØI	ØD	S	kg x100
GAB11AC000	1/8"	10.37	15.88	2.03	0,10
GAB13AC000	1/4"	13.74	20.57	2.03	0,20
GAB17AC000	3/8"	17.28	23.80	2.03	0,20
GAB21AC000	1/2"	21.54	28.58	2.49	0,30
GAB27AC000	3/4"	27.05	34.93	2.34	0,60
GAB33AC000	1"	33.89	42.80	3.25	0,70
GAB42AC000	1"1/4	42.93	52.38	3.20	1,05
GAB48AC000	1"1/2	48.44	58.60	3.20	1,10
GAB60AC000	2"	60.58	73.03	3.25	2,00

Codice Code	Per filetto For thread BSP	ØI	ØD	S	kg x100
GAB08AC000	M8	8.70	14.00	1.00	0,10
GAB10AC000	M10	10.70	16.00	1.50	0,10
GAB12AC000	M12	12.70	18.00	1.50	0,15
GAB14AC000	M14	14.70	22.00	1.50	0,20
GAB16AC000	M16	16.70	24.00	1.50	0,20
GAB18AC000	M18	18.70	26.00	1.50	0,25
GAB20AC000	M20	20.70	28.00	1.50	0,30
GAB22AC000	M22	22.70	30.00	2.00	0,30

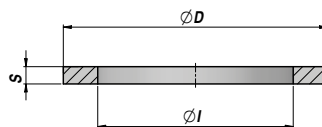
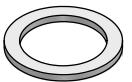
MATERIALE : ACCIAIO+NBR

MATERIAL : STEEL+NBR

**RONDELLA RAME  
COPPER WASHER**

**NEW!**

**GAR**



Codice Code	Per filetto For thread BSP	ØI	ØD	S	kg x100
GAR1000000	1/8"	10.00	16.00	1.50	0,14
GAR1300000	1/4"	13.50	19.00	1.50	0,18
GAR1700000	3/8"	17.00	23.00	1.50	0,19
GAR2100000	1/2"	21.50	27.00	1.50	0,24
GAR2300000	5/8"	23.00	30.00	1.50	0,28
GAR2700000	3/4"	27.00	33.00	1.50	0,32
GAR3300000	1"	33.50	40.00	1.50	0,56
GAR4200000	1"1/4	42.00	50.00	1.50	0,72
GAR4800000	1"1/2	48.00	55.00	1.50	0,70
GAR6000000	2"	60.00	68.00	1.50	1,00

Codice Code	Per filetto For thread BSP	ØI	ØD	S	kg x100
GAR0600000	M6	6.00	12.00	1.50	0,10
GAR0800000	M8	8.00	12.00	1.50	0,10
GAR0900000	M8	8.00	14.00	1.50	0,10
GAR0700000	M10	10.00	14.00	1.50	0,10
GAR1200000	M12	12.00	18.00	1.50	0,16
GAR1400000	M14	14.00	20.00	1.50	0,18
GAR1600000	M16	16.00	22.00	1.50	0,22
GAR1800000	M18	18.00	24.00	1.50	0,25
GAR2000000	M20	20.00	26.00	1.50	0,26
GAR2200000	M22	22.00	28.00	1.50	0,30

MATERIALE : RAME

MATERIAL : COPPER