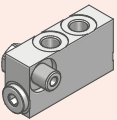
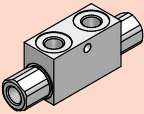
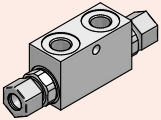
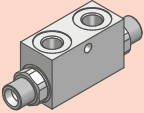
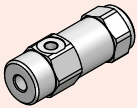
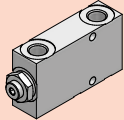
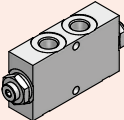
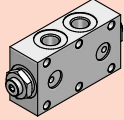
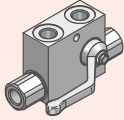
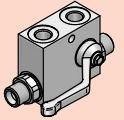
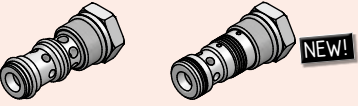
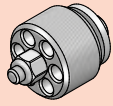
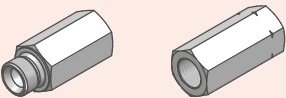
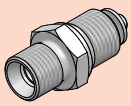


VALVOLE DI BLOCCO PILOTATE PILOT OPERATED CHECK VALVES

	Descrizione - Description	Type	Page
	VALVOLA DI BLOCCO PILOTATA - (TENUTA A CONO) PILOT OPERATED CHECK VALVE - (POPPET TYPE)	VRSE...CIL VRDE...CIL	252
	VALVOLA DI BLOCCO PILOTATA - (TENUTA A CONO) PILOT OPERATED CHECK VALVE - (POPPET TYPE)	VRSE-F...FF VRDE-F...FF	253
 NEW!	VALVOLA DI BLOCCO PILOTATA DIN 2353 - (TENUTA A CONO) PILOT OPERATED CHECK VALVE DIN 2353 - (POPPET TYPE)	VRSE-A...FF VRDE-A...FF	254
	VALVOLA DI BLOCCO PILOTATA DIN 2353 - (TENUTA A CONO) PILOT OPERATED CHECK VALVE DIN 2353 - (POPPET TYPE)	VRSE-AZ...FF VRDE-AZ...FF	255
	VALVOLA DI BLOCCO PILOTATA - (TENUTA A CONO) PILOT OPERATED CHECK VALVE - (POPPET TYPE)	VBPS	256
 NEW!	VALVOLA DI BLOCCO PILOTATA - (TENUTA A CONO) PILOT OPERATED CHECK VALVE - (POPPET TYPE)	VPSE	256
	VALVOLA DI BLOCCO PILOTATA - (TENUTA A CONO) PILOT OPERATED CHECK VALVE - (POPPET TYPE)	VPDE	257
	VALVOLA DI BLOCCO PILOTATA - (TENUTA A CONO) PILOT OPERATED CHECK VALVE - (POPPET TYPE)	VPDE/F	257
	VALVOLA DI BLOCCO PILOTATA + BY PASS (TENUTA A CONO) PILOT OPERATED CHECK VALVE + BY PASS (POPPET TYPE)	VPRSE	258
	VALVOLA DI BLOCCO PILOTATA DIN 2353 + BY PASS (TENUTA A CONO) PILOT OPERATED CHECK VALVE DIN 2353 + BY PASS (POPPET TYPE)	VPRSE-DIN	258
 NEW!	VALVOLA DI BLOCCO PILOTATA - (TENUTA A CONO) PILOT OPERATED CHECK VALVE - (POPPET TYPE)	VRPC VCP	259
	VALVOLA PARACADUTE HOSE BURST VALVE	VUBA	260
	COLLETTORE PER VALVOLA "VUBA" "VUBA" VALVE ADAPTER	CMF x VUBA CFF x VUBA	260
 NEW!	VALVOLA PARACADUTE DIN 2353 HOSE BURST VALVE DIN 2353	VUBA DIN	261

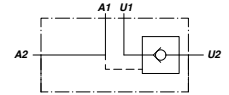
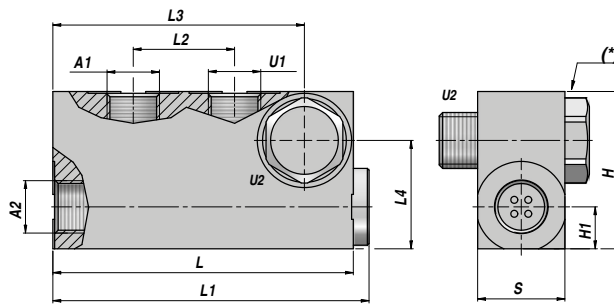
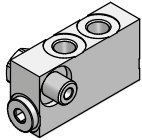
VALVOLE DI BLOCCO PILOTATE - PILOT OPERATED CHECK VALVES

VRSE...CIL

NEW!

SEMPLICE EFFETTO
SINGLE ACTING

VALVOLA DI BLOCCO PILOTATA (TENUTA A CONO)
PILOT OPERATED CHECK VALVE (POPPET TYPE)



Codice Code	A1 - U1 BSP	A2 - U2 BSP	Q MAX l/min	P MAX bar	PILOT RATIO	Tipo Type	L	L1	L2	L3	L4	H1	H	S	kg
VSG325.B10450	1/4"	1/4"	20	300	1:4.9	VRSE 010 CIL	84	88.5	24	68.5	27	10	40	20	0,45
VSG325.B20490	3/8"	3/8"	20	300	1:4.9	VRSE 020 CIL	86	90.5	26	72.0	31	12	45	25	0,65

Pressione di apertura - Opening pressure : 1 bar

(*) = Coppia di serraggio - Tightening torque

VRSE 010 CIL 1/4" = 40 Nm - VRSE 010 CIL 3/8" = 55 Nm

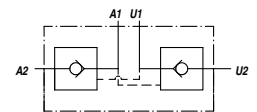
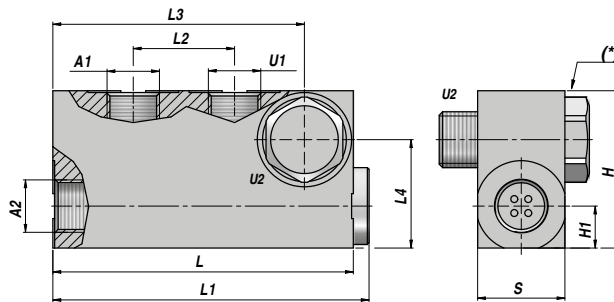
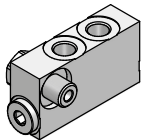
MATERIALE CORPO : ACCIAIO
BODY MATERIAL : STEEL

MONTAGGIO SU CILINDRO
CYLINDER MOUNTING

VRDE...CIL

DOPPIO EFFETTO
DOUBLE ACTING

VALVOLA DI BLOCCO PILOTATA (TENUTA A CONO)
PILOT OPERATED CHECK VALVE (POPPET TYPE)



Codice Code	A1 - U1 BSP	A2 - U2 BSP	Q MAX l/min	P MAX bar	PILOT RATIO	Tipo Type	L	L1	L2	L3	L4	H1	H	S	kg
VSG326.B10450	1/4"	1/4"	20	300	1:4.9	VRDE 010 CIL	84	88.5	24	68.5	27	10	40	20	0,45
VSG326.B20490	3/8"	3/8"	20	300	1:4.9	VRDE 020 CIL	86	90.5	26	72.0	31	12	45	25	0,65

Pressione di apertura - Opening pressure : 1 bar

(*) = Coppia di serraggio - Tightening torque

VRDE 010 CIL 1/4" = 40 Nm - VRDE 010 CIL 3/8" = 55 Nm

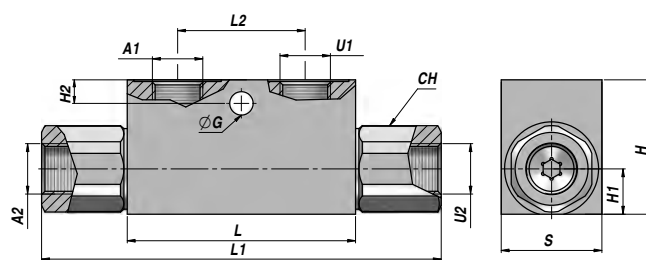
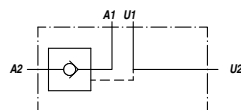
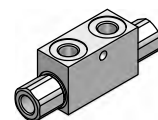
MATERIALE CORPO : ACCIAIO
BODY MATERIAL : STEEL

MONTAGGIO SU CILINDRO
CYLINDER MOUNTING

VALVOLA DI BLOCCO PILOTATA (TENUTA A CONO)
PILOT OPERATED CHECK VALVE (POPPET TYPE)

SEMPLICE EFFETTO
SINGLE ACTING

VRSE-F ...FF



Codice Code	A1 - U1 BSP	A2 - U2 BSP	Q MAX l/min	P MAX bar	PILOT RATIO	Tipo Type	L	L1	L2	H1	H2	ØG	CH	H	S	kg
VSG311.F00404	1/8"	1/8"	20	350	1:4.5	VRSE-F 005 FF	53	86	20	11	-	-	17	30	20	0,40
VSG311.F10454	1/4"	1/4"	30	350	1:4.5	VRSE-F 010 FF	68	118	38	13	7	7.0	24	40	30	0,68
VSG311.F15454	3/8"	3/8"	30	350	1:4.5	VRSE-F 015 FF	68	118	38	13	7	7.0	24	40	30	0,63
VSG311.F20404	3/8"	3/8"	50	300	1:4	VRSE-F 020 FF	80	144	40	16	15	8.5	27	50	30	0,97
VSG311.F25404	1/2"	1/2"	50	300	1:4	VRSE-F 025 FF	80	144	40	16	15	8.5	27	50	30	0,90
VSG311.F30404	1/2"	1/2"	80	300	1:4	VRSE-F 030 FF	90	171	40	20	15	8.5	30	60	40	1,69
VSG311.F40404	3/4"	3/4"	120	300	1:4	VRSE-F 040 FF	107	196	60	23	16	8.5	41	70	50	3,06

Pressione di apertura - *Opening pressure* : bar 0.5 - 4 (standard) - 8

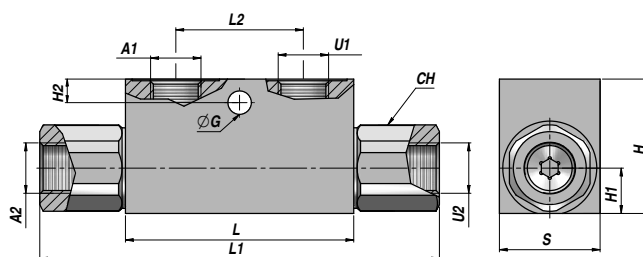
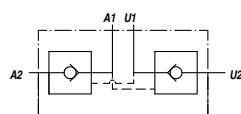
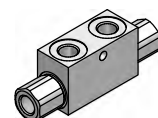
MATERIALE CORPO : ACCIAIO
 BODY MATERIAL : STEEL

MONTAGGIO SU CILINDRO
 CYLINDER MOUNTING

VALVOLA DI BLOCCO PILOTATA (TENUTA A CONO)
PILOT OPERATED CHECK VALVE (POPPET TYPE)

DOPPIO EFFETTO
DOUBLE ACTING

VRDE-F ...FF



Codice Code	A1 - U1 BSP	A2 - U2 BSP	Q MAX l/min	P MAX bar	PILOT RATIO	Tipo Type	L	L1	L2	H1	H2	ØG	CH	H	S	kg
VSG312.F00404	1/8"	1/8"	20	350	1:4.5	VRDE-F 005 FF	53	86	20	11	-	-	17	30	20	0,40
VSG312.F10454	1/4"	1/4"	30	350	1:4.5	VRDE-F 010 FF	68	118	38	13	7	7.0	24	40	30	0,69
VSG312.F15454	3/8"	3/8"	30	350	1:4.5	VRDE-F 015 FF	68	118	38	13	7	7.0	24	40	30	0,64
VSG312.F20404	3/8"	3/8"	50	300	1:4	VRDE-F 020 FF	80	144	40	16	15	8.5	27	50	30	0,98
VSG312.F25404	1/2"	1/2"	50	300	1:4	VRDE-F 025 FF	80	144	40	16	15	8.5	27	50	30	0,91
VSG312.F30404	1/2"	1/2"	80	300	1:4	VRDE-F 030 FF	90	171	40	20	15	8.5	30	60	40	1,72
VSG312.F40404	3/4"	3/4"	120	300	1:4	VRDE-F 040 FF	107	196	60	23	16	8.5	41	70	50	3,11

Pressione di apertura - *Opening pressure* : bar 0.5 - 4 (standard) - 8

MATERIALE CORPO : ACCIAIO
 BODY MATERIAL : STEEL

MONTAGGIO SU CILINDRO
 CYLINDER MOUNTING

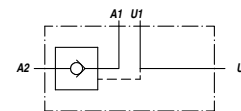
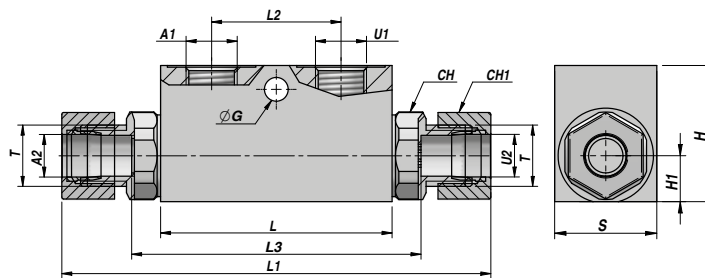
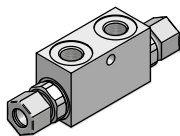
VALVOLE DI BLOCCO PILOTATE - PILOT OPERATED CHECK VALVES

VRSE-A...FF

NEW!

SEMPLICE EFFETTO
SINGLE ACTING

VALVOLA DI BLOCCO PILOTATA DIN 2353 (TENUTA A CONO)
PILOT OPERATED CHECK VALVE DIN 2353 (POPPET TYPE)



CON DADO E ANELLO DI SERRAGGIO
WITH NUT AND CUTTING RING

Codice Code	A1 - U1 BSP	A2 - U2	T	Q MAX l/min	P MAX bar	PILOT RATIO	Tipo Type	L	L1	L2	L3	H1	H2	ØG	CH	CH1	H	S	kg
VSG323.F05454	1/4"	Ø10	M16x1.5	20	350	1:4.5	VRSE-A 005 FF	68	138	38	86	13	7	7.0	24	20	40	30	0,64
VSG323.F10454	1/4"	Ø12	M18x1.5	30	350	1:4.5	VRSE-A 010 FF	68	138	38	86	13	7	7.0	24	22	40	30	0,67
VSG323.F14454	3/8"	Ø10	M16x1.5	20	350	1:4.5	VRSE-A 014 FF	68	138	38	86	13	7	7.0	24	20	40	30	0,63
VSG323.F15454	3/8"	Ø12	M18x1.5	30	350	1:4.5	VRSE-A 015 FF	68	138	38	86	13	7	7.0	24	22	40	30	0,66
VSG323.F20404	3/8"	Ø15	M22x1.5	50	300	1:4	VRSE-A 020 FF	80	166	40	108	16	15	8.5	27	27	50	30	0,97
VSG323.F25404	1/2"	Ø15	M22x1.5	50	300	1:4	VRSE-A 025 FF	80	166	40	108	16	15	8.5	27	27	50	30	0,91
VSG323.F30404	1/2"	Ø18	M26x1.5	80	300	1:4	VRSE-A 030 FF	90	180	40	133	20	15	8.5	30	32	60	40	1,67

Pressione di apertura - Opening pressure : bar 0.5 - 4 (standard) - 8

MATERIALE CORPO : ACCIAIO
BODY MATERIAL : STEEL

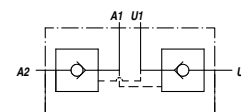
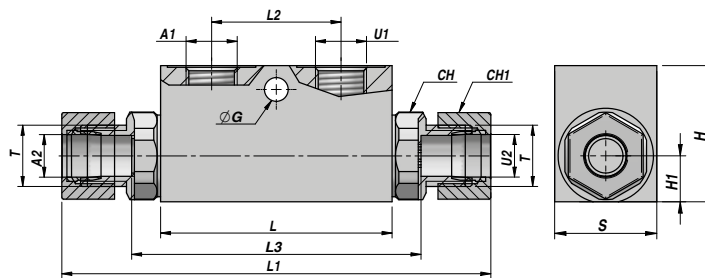
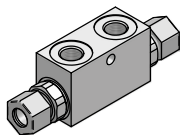
MONTAGGIO SU CILINDRO
CYLINDER MOUNTING

VRDE-A...FF

NEW!

DOPPIO EFFETTO
DOUBLE ACTING

VALVOLA DI BLOCCO PILOTATA DIN 2353 (TENUTA A CONO)
PILOT OPERATED CHECK VALVE DIN 2353 (POPPET TYPE)



CON DADO E ANELLO DI SERRAGGIO
WITH NUT AND CUTTING RING

Codice Code	A1 - U1 BSP	A2 - U2	T	Q MAX l/min	P MAX bar	PILOT RATIO	Tipo Type	L	L1	L2	L3	H1	H2	ØG	CH	CH1	H	S	kg
VSG324.F05454	1/4"	Ø10	M16x1.5	20	350	1:4.5	VRDE-A 005 FF	68	138	38	86	13	7	7.0	24	20	40	30	0,64
VSG324.F10454	1/4"	Ø12	M18x1.5	30	350	1:4.5	VRDE-A 010 FF	68	138	38	86	13	7	7.0	24	22	40	30	0,67
VSG324.F14454	3/8"	Ø10	M16x1.5	20	350	1:4.5	VRDE-A 014 FF	68	138	38	86	13	7	7.0	24	20	40	30	0,63
VSG324.F15454	3/8"	Ø12	M18x1.5	30	350	1:4.5	VRDE-A 015 FF	68	138	38	86	13	7	7.0	24	22	40	30	0,66
VSG324.F20404	3/8"	Ø15	M22x1.5	50	300	1:4	VRDE-A 020 FF	80	166	40	108	16	15	8.5	27	27	50	30	0,97
VSG324.F25404	1/2"	Ø15	M22x1.5	50	300	1:4	VRDE-A 025 FF	80	166	40	108	16	15	8.5	27	27	50	30	0,91
VSG324.F30404	1/2"	Ø18	M26x1.5	80	300	1:4	VRDE-A 030 FF	90	180	40	133	20	15	8.5	30	32	60	40	1,67

Pressione di apertura - Opening pressure : bar 0.5 - 4 (standard) - 8

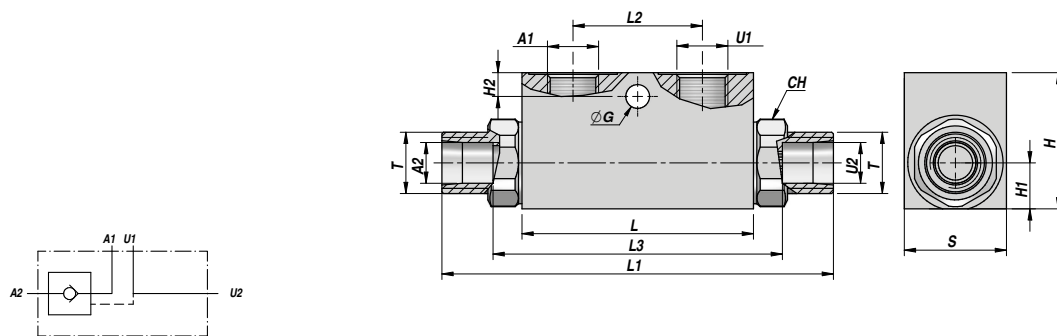
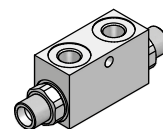
MATERIALE CORPO : ACCIAIO
BODY MATERIAL : STEEL

MONTAGGIO SU CILINDRO
CYLINDER MOUNTING

VALVOLA DI BLOCCO PILOTATA DIN 2353 (TENUTA A CONO)
PILOT OPERATED CHECK VALVE DIN 2353 (POPPET TYPE)

SEMPLICE EFFETTO
SINGLE ACTING

VRSE-AZ...FF



SENZA DADO E ANELLO DI SERRAGGIO
WITHOUT NUT AND CUTTING RING

Codice Code	A1 - U1 BSP	A2 - U2	T	Q MAX l/min	P MAX bar	PILOT RATIO	Tipo Type	L	L1	L2	L3	H1	H2	ØG	CH	H	S	kg
VSG321.F05454 NEW!	1/4"	Ø10	M16x1.5	20	350	1:4.5	VRSE-AZ 005 FF	68	115	38	86	13	7	7.0	24	40	30	0,59
VSG321.F10454	1/4"	Ø12	M18x1.5	30	350	1:4.5	VRSE-AZ 010 FF	68	115	38	86	13	7	7.0	24	40	30	0,62
VSG321.F14454 NEW!	3/8"	Ø10	M16x1.5	20	350	1:4.5	VRSE-AZ 014 FF	68	115	38	86	13	7	7.0	24	40	30	0,58
VSG321.F15454	3/8"	Ø12	M18x1.5	30	350	1:4.5	VRSE-AZ 015 FF	68	115	38	86	13	7	7.0	24	40	30	0,61
VSG321.F20404	3/8"	Ø15	M22x1.5	50	300	1:4	VRSE-AZ 020 FF	80	140	40	108	16	15	8.5	27	50	30	0,88
VSG321.F25404	1/2"	Ø15	M22x1.5	50	300	1:4	VRSE-AZ 025 FF	80	140	40	108	16	15	8.5	27	50	30	0,82
VSG321.F30404	1/2"	Ø18	M26x1.5	80	300	1:4	VRSE-AZ 030 FF	90	152	40	133	20	15	8.5	30	60	40	1,54

Pressione di apertura - Opening pressure : bar 0,5 - 4 (standard) - 8

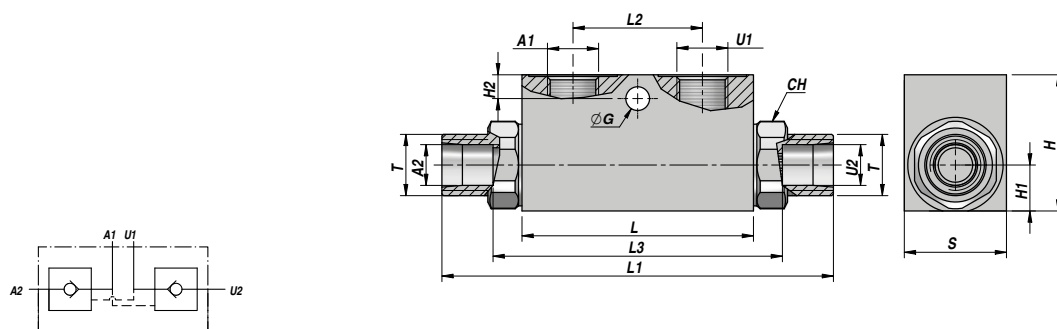
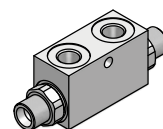
MATERIALE CORPO : ACCIAIO
BODY MATERIAL : STEEL

MONTAGGIO SU CILINDRO
CYLINDER MOUNTING

VALVOLA DI BLOCCO PILOTATA DIN 2353 (TENUTA A CONO)
PILOT OPERATED CHECK VALVE DIN 2353 (POPPET TYPE)

DOPPIO EFFETTO
DOUBLE ACTING

VRDE-AZ...FF



SENZA DADO E ANELLO DI SERRAGGIO
WITHOUT NUT AND CUTTING RING

Codice Code	A1 - U1 BSP	A2 - U2	T	Q MAX l/min	P MAX bar	PILOT RATIO	Tipo Type	L	L1	L2	L3	H1	H2	ØG	CH	H	S	kg
VSG322.F05454 NEW!	1/4"	Ø10	M16x1.5	20	350	1:4.5	VRDE-AZ 005 FF	68	115	38	86	13	7	7.0	24	40	30	0,59
VSG322.F10454	1/4"	Ø12	M18x1.5	30	350	1:4.5	VRDE-AZ 010 FF	68	115	38	86	13	7	7.0	24	40	30	0,62
VSG322.F14454 NEW!	3/8"	Ø10	M16x1.5	20	350	1:4.5	VRDE-AZ 014 FF	68	115	38	86	13	7	7.0	24	40	30	0,58
VSG322.F15454	3/8"	Ø12	M18x1.5	30	350	1:4.5	VRDE-AZ 015 FF	68	115	38	86	13	7	7.0	24	40	30	0,61
VSG322.F20404	3/8"	Ø15	M22x1.5	50	300	1:4	VRDE-AZ 020 FF	80	140	40	108	16	15	8.5	27	50	30	0,88
VSG322.F25404	1/2"	Ø15	M22x1.5	50	300	1:4	VRDE-AZ 025 FF	80	140	40	108	16	15	8.5	27	50	30	0,82
VSG322.F30404	1/2"	Ø18	M26x1.5	80	300	1:4	VRDE-AZ 030 FF	90	152	40	133	20	15	8.5	30	60	40	1,54

Pressione di apertura - Opening pressure : bar 0,5 - 4 (standard) - 8

MATERIALE CORPO : ACCIAIO
BODY MATERIAL : STEEL

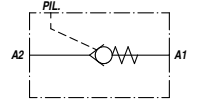
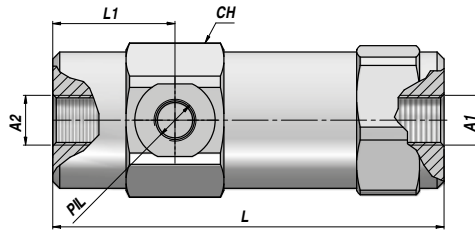
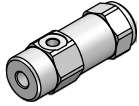
MONTAGGIO SU CILINDRO
CYLINDER MOUNTING

VALVOLE DI BLOCCO PILOTATE - PILOT OPERATED CHECK VALVES

VBPS

SEMPLICE EFFETTO
SINGLE ACTING

VALVOLA DI BLOCCO PILOTATA (TENUTA A CONO)
PILOT OPERATED CHECK VALVE (POPPET TYPE)



Codice Code	A1 - A2 BSP	PIL BSP	Q MAX l/min	P MAX bar	PILOT RATIO	Tipo Type	L	L1	CH	kg
VSG341.109500	1/4"	1/4"	25	350	1:9.5	VBPS 010	103.0	32.5	36	0,69
VSG341.206000	3/8"	1/4"	40	350	1:6	VBPS 020	111.0	35.0	40	0,93
VSG341.304300	1/2"	1/4"	60	350	1:4.3	VBPS 030	122.0	38.0	42	1,08
VSG341.404000	3/4"	1/4"	90	300	1:4.4	VBPS 040	145.5	44.5	55	2,32
VSG341.503500	1"	1/4"	130	260	1:3.5	VBPS 050	164.0	44.5	55	2,36

Pressione di apertura - Opening pressure : bar 1 (standard) - 4 - 8

MATERIALE CORPO : ACCIAIO
BODY MATERIAL : STEEL

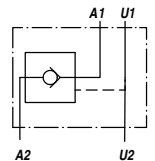
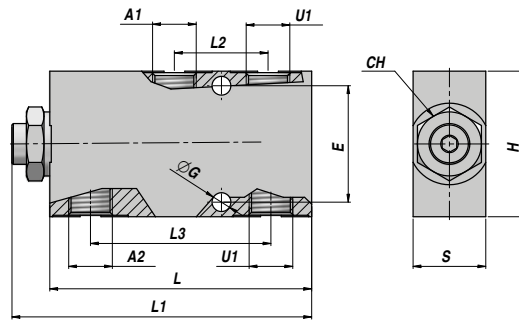
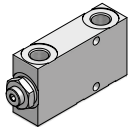
MONTAGGIO IN LINEA
LINE MOUNTING

VPSE

NEW!

SEMPLICE EFFETTO
SINGLE ACTING

VALVOLA DI BLOCCO PILOTATA (TENUTA A CONO)
PILOT OPERATED CHECK VALVE (POPPET TYPE)



Codice Code	A1 - U1 BSP	A2 - U2 BSP	Q MAX l/min	P MAX bar	PILOT RATIO	Tipo Type	L	L1	L2	L3	ØG	E	H	S	kg
VAG350.207004	3/8"	3/8"	35	350	1:7	VPSE 020	83	95	34	49	6.5	40	60	35	0,53
VAG350.257004	1/2"	1/2"	35	350	1:7	VPSE 025	83	95	34	49	6.5	40	60	35	0,49

Pressione di apertura - Opening pressure : bar 0,5 - 4 (standard) - 8

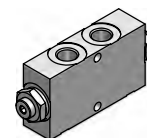
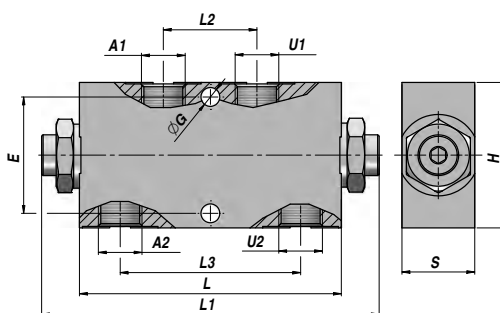
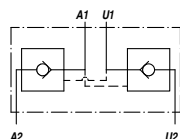
MATERIALE CORPO : ALLUMINIO
BODY MATERIAL : ALUMINIUM

MONTAGGIO IN LINEA
LINE MOUNTING

VALVOLA DI BLOCCO PILOTATA (TENUTA A CONO)
PILOT OPERATED CHECK VALVE (POPPET TYPE)

DOPPIO EFFETTO
DOUBLE ACTING

VPDE



Codice Code	A1 - U1 BSP	A2 - U2 BSP	Q MAX l/min	P MAX bar	PILOT RATIO	Tipo Type	L	L1	L2	L3	ØG	E	H	S	kg
VSG352.104004 **	1/4"	1/4"	20	350	1:4	VPDE 010	90	113	32	62	6.5	40	50	25	0,79
VSG352.154004 **	3/8"	3/8"	20	350	1:4	VPDE 015	90	113	32	62	6.5	40	50	25	0,76
VAG352.207004 *	3/8"	3/8"	35	350	1:7	VPDE 020	96	113	32	62	6.5	40	60	35	0,62
VAG352.257004 *	1/2"	1/2"	35	350	1:7	VPDE 025	96	113	32	62	6.5	40	60	35	0,60
VAG352.305004 *	1/2"	1/2"	50	300	1:5.2	VPDE 030	117	139	43	84	10.1	40	70	40	1,00

Pressione di apertura - Opening pressure : bar 0.5 - 4 (standard) - 8

** Tenuta a sfera - Ball type

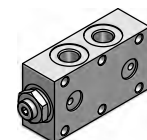
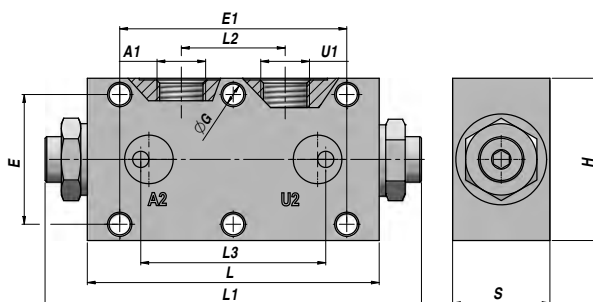
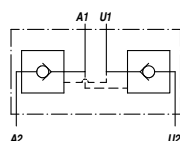
MATERIALE CORPO : ACCIAIO /* = ALLUMINIO
BODY MATERIAL : STEEL /* = ALUMINIUM

MONTAGGIO IN LINEA
LINE MOUNTING

VALVOLA DI BLOCCO PILOTATA (TENUTA A CONO)
PILOT OPERATED CHECK VALVE (POPPET TYPE)

DOPPIO EFFETTO
DOUBLE ACTING

VPDE/F



Codice Code	A1 - U1 BSP	A2 - U2	Q MAX l/min	P MAX bar	PILOT RATIO	Tipo Type	L	L1	L2	L3	ØG	E	E1	H	S	kg
VAG353.104004 **	1/4"	Ø5	20	350	1:4	VPDE-F 010	90	113	32	52	6.5	40	70	50	30	0,43
VAG353.154004 **	3/8"	Ø5	20	350	1:4	VPDE-F 015	90	113	32	52	6.5	40	70	50	30	0,43
VAG353.207004 *	3/8"	Ø5	35	350	1:7	VPDE-F 020	96	113	32	62	6.5	40	70	60	35	0,60
VAG353.257004 *	1/2"	Ø5	35	350	1:7	VPDE-F 025	96	113	32	62	6.5	40	70	60	35	0,60

Pressione di apertura - Opening pressure : bar 0,5 - 4 (standard) - 8

** Tenuta a sfera - Ball type

MATERIALE CORPO : ACCIAIO /* = ALLUMINIO
BODY MATERIAL : STEEL /* = ALUMINIUM

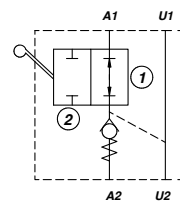
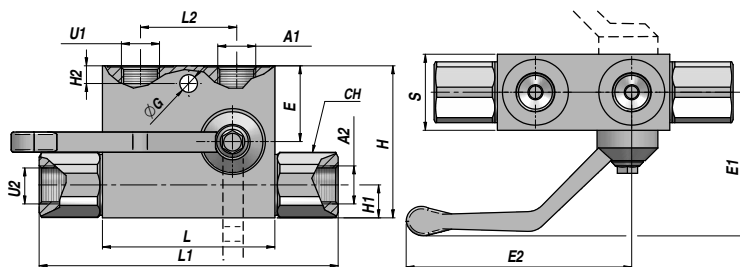
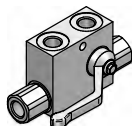
FLANGIABILE
FACE MOUNTING

VALVOLE DI BLOCCO PILOTATE - PILOT OPERATED CHECK VALVES

VRPSE

SEMPLICE EFFETTO
SINGLE ACTING

VALVOLA DI BLOCCO PILOTATA + BY PASS (TENUTA A CONO)
PILOT OPERATED CHECK VALVE + BY PASS (POPPET TYPE)



Code Code	A1 - U1 BSP	A2 - U2 BSP	Q MAX l/min	P MAX bar	PILOT RATIO	Tipo Type	L	L1	L2	E	E1 max	E2 max	ØG	H2	CH	H1	H	S	kg
Versione sinistra - Left version																			
VSG331.104504	1/4"	1/4"	25	350	1:4.5	VRPSE 010-FL	68	118	38	29.0	65	90	7.0	7	24	13	60	30	0,95
VSG331.154504	3/8"	3/8"	25	350	1:4.5	VRPSE 015-FL	68	118	38	29.0	65	90	7.0	7	24	13	60	30	0,95
VSG331.204504	3/8"	3/8"	50	300	1:4	VRPSE 020-FL	80	143	40	25.5	60	100	8.5	9	27	16	60	30	1,12
VSG331.254504	1/2"	1/2"	50	300	1:4	VRPSE 025-FL	80	143	40	25.5	60	100	8.5	9	27	16	60	30	1,12
Versione destra - Right version																			
VSG332.104504	1/4"	1/4"	25	350	1:4.5	VRPSE 010-FR	68	118	38	29.0	65	90	7.0	7	24	13	60	30	0,95
VSG332.154504	3/8"	3/8"	25	350	1:4.5	VRPSE 015-FR	68	118	38	29.0	65	90	7.0	7	24	13	60	30	0,95
VSG332.204504	3/8"	3/8"	50	300	1:4	VRPSE 020-FR	80	143	40	25.5	60	100	8.5	9	27	16	60	30	1,12
VSG332.254504	1/2"	1/2"	50	300	1:4	VRPSE 025-FR	80	143	40	25.5	60	100	8.5	9	27	16	60	30	1,12

Pressione di apertura - Opening pressure : bar 0,5 - 4 (standard) - 8

A RICHIESTA - ON REQUEST : " VRPDE..." VALVOLA DOPPIO EFFETTO - DOUBLE EFFECT VALVE

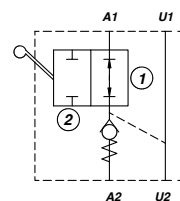
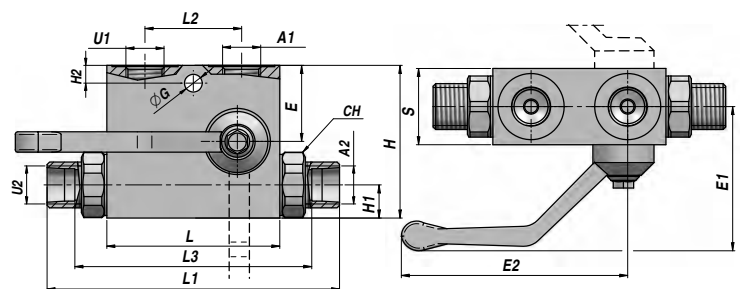
MATERIALE CORPO : ACCIAIO
BODY MATERIAL : STEEL

MONTAGGIO SU CILINDRO
CYLINDER MOUNTING

VRPSE-DIN

SEMPLICE EFFETTO
SINGLE ACTING

VALVOLA DI BLOCCO PILOTATA DIN 2353 + BY PASS (TENUTA A CONO)
PILOT OPERATED CHECK VALVE DIN 2353 + BY PASS (POPPET TYPE)



Code Code	A1 - U1 BSP	A2 - U2	T	Q MAX l/min	P MAX bar	PILOT RATIO	Tipo Type	L	L1	L2	L3	E	E1 max	E2 max	ØG	H2	CH	H1	H	S	kg
Versione sinistra - Left version																					
VSG333.104504	1/4"	Ø12	M18x1.5	25	350	1:4.5	VRPSE-DIN 010-FL	68	115	38	86	29.0	65	90	7.0	7	24	13	60	30	0,95
VSG333.154504	3/8"	Ø12	M18x1.5	25	350	1:4.5	VRPSE-DIN 015-FL	68	115	38	86	29.0	65	90	7.0	7	24	13	60	30	0,95
VSG333.204504	3/8"	Ø15	M22x1.5	50	300	1:4	VRPSE-DIN 020-FL	80	140	40	106	25.5	60	100	8.5	9	27	16	60	30	1,12
VSG333.254504	1/2"	Ø15	M22x1.5	50	300	1:4	VRPSE-DIN 025-FL	80	140	40	106	25.5	60	100	8.5	9	27	16	60	30	1,12
Versione destra - Right version																					
VSG334.104504	1/4"	Ø12	M18x1.5	25	350	1:4.5	VRPSE-DIN 010-FR	68	115	38	86	29.0	65	90	7.0	7	24	13	60	30	0,95
VSG334.154504	3/8"	Ø12	M18x1.5	25	350	1:4.5	VRPSE-DIN 015-FR	68	115	38	86	29.0	65	90	7.0	7	24	13	60	30	0,95
VSG334.204504	3/8"	Ø15	M22x1.5	50	300	1:4	VRPSE-DIN 020-FR	80	140	40	106	25.5	60	100	8.5	9	27	16	60	30	1,12
VSG334.254504	1/2"	Ø15	M22x1.5	50	300	1:4	VRPSE-DIN 025-FR	80	140	40	106	25.5	60	100	8.5	9	27	16	60	30	1,12

Pressione di apertura - Opening pressure : bar 0,5 - 4 (standard) - 8

A RICHIESTA - ON REQUEST : " VRPDE..." VALVOLA DOPPIO EFFETTO - DOUBLE EFFECT VALVE

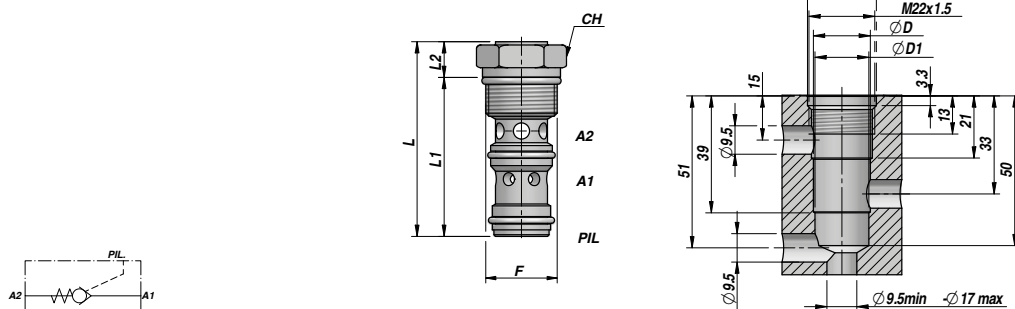
MATERIALE CORPO : ACCIAIO
BODY MATERIAL : STEEL

MONTAGGIO SU CILINDRO
CYLINDER MOUNTING

VALVOLA DI BLOCCO PILOTATA (TENUTA A CONO)
PILOT OPERATED CHECK VALVE (POPPET TYPE)

NEW!

VRPC



Codice Code	F	Q MAX l/min	P MAX bar	PILOT RATIO	Tipo Type	L	L1	L2	ØD	ØD1	CH	kg
VCM340.063404	M22x1.5	25	320	1:3.4	VRPC 06	57	49	8	19	18	27	0,10

Pressione di apertura - Opening pressure : 4 bar (standard) - 8

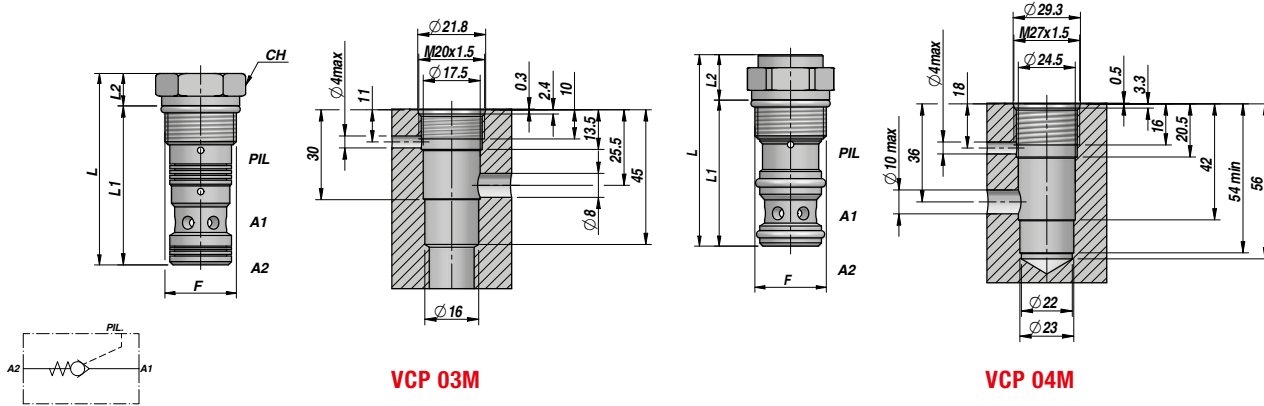
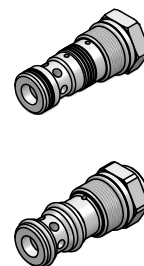
MATERIALE CORPO : ACCIAIO
BODY MATERIAL : STEEL

CARTUCCIA
CARTRIDGE

VALVOLA DI BLOCCO PILOTATA (TENUTA A CONO)
PILOT OPERATED CHECK VALVE (POPPET TYPE)

NEW!

VCP



VCP 03M

VCP 04M

Codice Code	F	Q MAX l/min	P MAX bar	PILOT RATIO	Tipo Type	L	L1	L2	CH	kg
VCM340.033103	M20x1.5	30	350	1:3	VCP 03M	46.3	39.3	7	24	0,08
VCM340.044004	M27x1.5	90	350	1:4	VCP 04M	67.0	49.0	18	32	0,10

Pressione di apertura - Opening pressure :

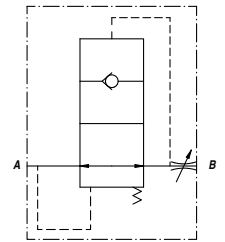
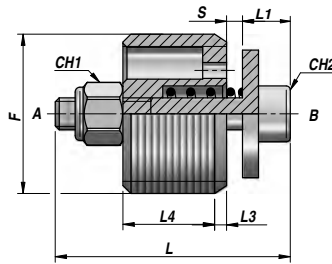
VCP 03M = 3 bar
VCP 04M = 4 bar

MATERIALE CORPO : ACCIAIO
BODY MATERIAL : STEEL

CARTUCCIA
CARTRIDGE

VUBA

VALVOLA PARACADUTE
HOSE BURST VALVE



Codice Code	F BSP	Q MAX l/min	P MAX bar	S	Q STD l/min	Tipo Type	L	L1	L3	L4	CH1	CH2	kg x 100
VCG390.100800	1/4"	29	350	0.8	15.5	VUBA 010 - 0.8	19	5.0	1.0	7.0	5.5	2.5	1,00
VCG390.201500	3/8"	45	350	1.5	35.5	VUBA 020 - 1.5	23	5.0	1.5	9.5	5.5	2.5	1,50
VCG390.301800	1/2"	67	350	1.9	60.0	VUBA 030 - 1.9	29	6.0	1.5	11.5	7.0	3.0	2,50
VCG390.402200	3/4"	169	350	2.2	149.0	VUBA 040 - 2.2	34	6.0	2.5	15.5	7.0	3.0	4,50
VCG390.502600	1"	223	350	2.6	190.0	VUBA 050 - 2.6	40	8.5	1.5	18.5	8.0	4.0	9,80

S = APERTURA STANDARD - STANDARD OPENING

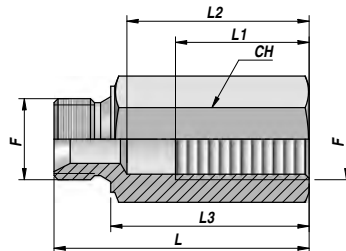
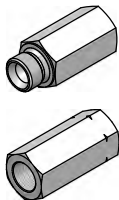
SUPERFICI DI TENUTA LAPPATE - LAPPED TIGHT SURFACES

MATERIALE CORPO : ACCIAIO
BODY MATERIAL : STEEL

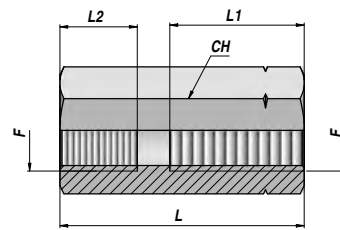
CARTUCCIA
CARTRIDGE

CMF x VUBA CFF x VUBA

COLLETORE PER VALVOLA "VUBA"
"VUBA" VALVE ADAPTER



TYPE CMF



TYPE CFF

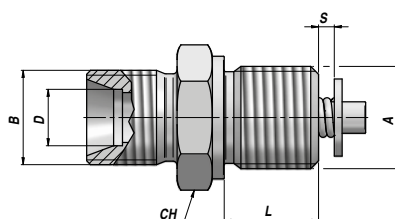
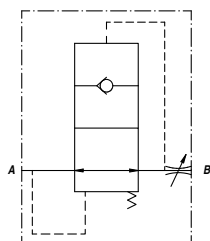
Codice Code	F BSP	P MAX bar	Tipo Type	L	L1	L2	L3	CH	kg x 100
MASCHIO-FEMMINA MALE-FEMALE									
VCG391.100000	1/4"	350	CMFxVUBA-010	50	23	31	38	19	7,00
VCG391.200000	3/8"	350	CMFxVUBA-020	60	30	43	48	22	9,50
VCG391.300000	1/2"	350	CMFxVUBA-030	63	33	45	49	27	14,70
VCG391.400000	3/4"	300	CMFxVUBA-040	75	36	50	59	32	22,50
VCG391.500000	1"	250	CMFxVUBA-050	88	46	60	70	41	42,50
FEMMINA-FEMMINA FEMALE-FEMALE									
VCG392.100000	1/4"	350	CFFxVUBA-010	50	20	12	-	19	7,00
VCG392.200000	3/8"	350	CFFxVUBA-020	58	27	14	-	22	9,80
VCG392.300000	1/2"	350	CFFxVUBA-030	60	33	19	-	27	14,50
VCG392.400000	3/4"	300	CFFxVUBA-040	76	36	19	-	32	22,20
VCG392.500000	1"	250	CFFxVUBA-050	85	46	18	-	41	43,50

MATERIALE : ACCIAIO
MATERIAL : STEEL

VALVOLA PARACADUTE - DIN 2353
HOSE BURST VALVE - DIN 2353

NEW!

VUBA DIN



Codice Code	A BSP	B	Q MAX l/min	P MAX bar	S	Q STD l/min	Tipo Type	L	D	CH	kg x 100
V1690.0784	3/8"	M16x1.5	50	350	1.2	32	VUBA-DIN 3/8" T10L	11	10	22	6,00
V1690.0786	3/8"	M18x1.5	50	350	1.2	32	VUBA-DIN 3/8" T12L	11	12	22	6,50
V1690.0787	3/8"	M22x1.5	50	350	1.2	32	VUBA-DIN 3/8" T15L	11	15	24	9,70
V1690.0794	1/2"	M22x1.5	80	350	1.6	54	VUBA-DIN 1/2" T15L	13	15	27	11,50

S = APERTURA STANDARD - STANDARD OPENING

MATERIALE CORPO : ACCIAIO
BODY MATERIAL : STEEL

CARTUCCIA
CARTRIDGE