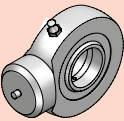
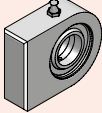
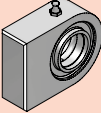
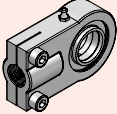
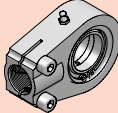
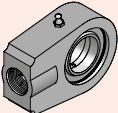
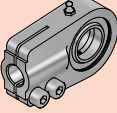
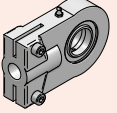
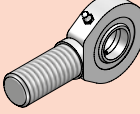
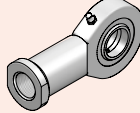
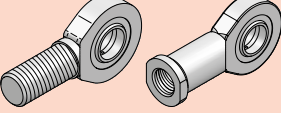
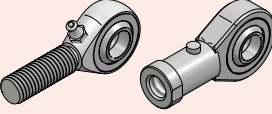


TERMINALI A SNODO INDUSTRIALI INDUSTRIAL BALL-JOINT ENDS

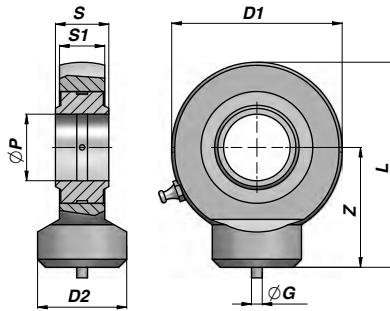
	Descrizione - Description	Type	Page
	NEW! TABELLA COMPARATIVA TERMINALI A SNODO COMPARATIVE TABLE FOR BALL-JOINT ENDS		142
	TERMINALE A SNODO RILUBRIFICABILE BALL-JOINT END WITH GREASE NIPPLE	CSTS...C	143
	TERMINALE A SNODO RILUBRIFICABILE BALL-JOINT END WITH GREASE NIPPLE	CSTS...N	143
	TERMINALE A SNODO RILUBRIFICABILE BALL-JOINT END WITH GREASE NIPPLE	CSTSCE...N	144
	TERMINALE A SNODO RILUBRIFICABILE BALL-JOINT END WITH GREASE NIPPLE	CSTAPR...CE	144
	TERMINALE A SNODO RILUBRIFICABILE BALL-JOINT END WITH GREASE NIPPLE	CSTAPR...U	145
	TERMINALE A SNODO RILUBRIFICABILE BALL-JOINT END WITH GREASE NIPPLE	CSTAPR...N	145
	NEW! TERMINALE A SNODO RILUBRIFICABILE BALL-JOINT END WITH GREASE NIPPLE	CSTAPR...UGAS	146
	NEW! TERMINALE A SNODO RILUBRIFICABILE BALL-JOINT END WITH GREASE NIPPLE	CSTAPR...S	146
	TERMINALE A SNODO RILUBRIFICABILE BALL-JOINT END WITH GREASE NIPPLE	CSTFE...DO	147
	TERMINALE A SNODO RILUBRIFICABILE BALL-JOINT END WITH GREASE NIPPLE	CSTFI...DO	147
	NEW! TERMINALE A SNODO NON RICHIEDENTE MANUTENZIONE MAINTENANCE FREE BALL-JOINT	CSTFE...UK CSTFI...UK	148
	NEW! TERMINALE A SNODO RILUBRIFICABILE BALL-JOINT END WITH GREASE NIPPLE	CSTFE...PB CSTFI...PB	149

**TABELLA COMPARATIVA ROTULE "GE"
CROSS REFERENCE SPHERICAL PLAIN BEARINGS**

CONTARINI	SKF	INA	International Reference
CSTS ... C	SC ... ES	GK ... DO	-
CSTS ... N	SCF ... EF	GF ... DO	-
CSTSCE ... N	-	-	-
CSTAPR ... CE	SIQG ... ES	GIHNRK ... LO	-
CSTAPR ... U	SIR ... ES	GIHRK ... DO	-
CSTAPR ... N	-	-	-
CSTAPR ... UGAS	-	-	-
CSTAPR ... S	SIJ ... ES	-	-
CSTFE ... DO / ... DO2RS	SI ... E (6÷12) - SI ... ES (15÷30) - SIA ... ES-2RS (35÷80)	GAR ... DO / GAR ... DO-2RS	-
CSTFI ... DO / ... DO2RS	SA ... E (6÷12) - SA ... ES (15÷30) - SAA ... ES-2RS (35÷80)	GIR ... DO / GIR ... DO-2RS	-
CSTFE ... UK / ... UK2RS	SA ... C - SAA ... TXE-2LS	GAR ... UK / GAR ... UK-2RS	-
CSTFI ... UK / ... UK2RS	SI ... C - SIA ... TXE-2LS	GIR ... UK / GIR ... UK-2RS	-
CSTFE ... PB	SAKAC ... M	GAKR ... PB	-
CSTFI ... PB	SIKAC ... M	GIKR ... PB	-
CSTFE ... PW	SAKB ... F	GAKR ... PW	-
CSTFI ... PW	SIKB ... F	GIKR ... PW	-

TERMINALE A SNODO RILUBRIFICABILE
BALL-JOINT END WITH GREASE NIPPLE

CSTS..C



Codice Code	ØP	Z	S	D1	S1	L	ØD2	ØG	FC (kN)	kg
*CSTS010C00	10	24	9	29	7	38.5	15.0	3	8.15	0.04
*CSTS012C00	12	27	10	34	8	44.0	17.5	3	10.80	0.06
**CSTS015C00	15	31	12	40	10	51.0	21.0	4	17.00	0.12
CSTS016C00 (A)	16	35	14	46	11	58.0	24.0	4	19.00	0.17
**CSTS017C00	17	35	14	46	11	58.0	24.0	4	21.20	0.18
CSTS020C00	20	38	16	53	13	64.5	27.5	4	30.00	0.26
CSTS025C00	25	45	20	64	17	77.0	33.5	4	48.00	0.45
CSTS030C00	30	51	22	73	19	87.5	40.0	4	62.00	0.67
CSTS035C00	35	61	25	82	21	102.0	47.0	4	80.00	1.02
CSTS040C00	40	69	28	92	23	115.0	52.0	4	100.00	1.40
CSTS045C00	45	77	32	102	27	128.0	58.0	6	127.00	1.93
CSTS050C00	50	88	35	112	30	144.0	62.0	6	156.00	2.69
CSTS060C00	60	100	44	135	38	167.5	70.0	6	245.00	4.60
CSTS070C00	70	115	49	160	42	195.0	80.0	6	315.00	7.00
CSTS080C00	80	141	55	180	47	231.0	95.0	6	400.00	11.00

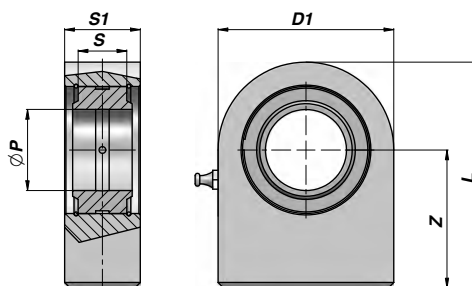
FC = CARICO DINAMICO AMMESSO - MAX DYNAMIC LOAD
(A) = FUORI NORMATIVA - OUT OF RULE

* = NON RILUBRIFICABILE - WITHOUT GREASE NIPPLE
** = RILUBRIFICABILE MEDIANTE FORO - LUBRICATING HOLE IN THE HEAD

MATERIALE : ACCIAIO ISO 12240-1 SERIE E - TIPO S
MATERIAL : STEEL ISO 12240-1 SERIES E - TYPE S

TERMINALE A SNODO RILUBRIFICABILE
BALL-JOINT END WITH GREASE NIPPLE

CSTS..N



Codice Code	ØP	Z	S	D1	S1	L	FC (kN)	kg
CSTS015N00	15	31	12	45	16.0	53.5	17.0	0.22
**CSTS016N00 (A)	16	35	14	48	17.5	59.0	21.2	0.29
CSTS017N00	17	35	14	48	17.5	59.0	21.2	0.29
CSTS020N00	20	38	16	50	19.0	63.0	30.0	0.36
CSTS025N00	25	45	20	55	23.0	72.5	48.0	0.53
CSTS030N00	30	51	22	65	28.0	83.5	62.0	0.85
CSTS035N00	35	61	25	83	30.0	102.5	80.0	1.50
CSTS040N00	40	69	28	100	35.0	119.0	100.0	2.42
CSTS045N00	45	77	32	110	40.0	132.0	127.0	3.39
CSTS050N00	50	88	35	123	40.0	149.5	156.0	4.24
CSTS060N00	60	100	44	140	50.0	170.0	245.0	7.10
CSTS070N00	70	115	49	164	55.0	197.0	315.0	10.70
CSTS080N00	80	141	55	180	60.0	231.0	400.0	15.10
CSTS090N00 (1)	90	150	60	226	65.0	263.0	490.0	23.40
CSTS100N00 (1)	100	170	70	250	70.0	295.0	610.0	33.10
CSTS110N00 (1)	110	185	70	295	80.0	332.5	655.0	48.50
CSTS120N00 (1)	120	210	85	360	90.0	390.0	950.0	79.50

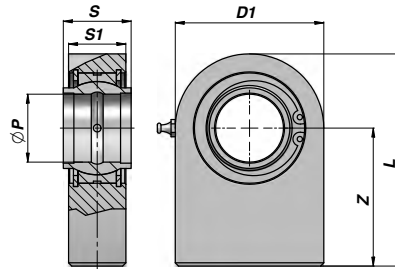
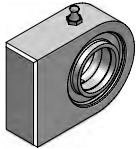
FC = CARICO DINAMICO AMMESSO - MAX DYNAMIC LOAD
(A) = FUORI NORMATIVA - OUT OF RULE

* = NON RILUBRIFICABILE - WITHOUT GREASE NIPPLE
(1) = PANTOGRAFATI - PROFILE PLATE

MATERIALE : ACCIAIO ISO 12240-1 SERIE E
MATERIAL : STEEL ISO 12240-1 SERIES E

CSTSCE...N

TERMINALE A SNODO RILUBRIFICABILE
BALL-JOINT END WITH GREASE NIPPLE



Codice Code	ØP	Z	S	D1	S1	L	FC (kN)	kg
CSTSCE720N	20	38	20	50	19	63.0	30.0	0,36
CSTSCE725N	25	45	25	55	23	72.5	48.0	0,54
CSTSCE732N	32	65	32	70	27	100.0	62.5	1,12
CSTSCE740N	40	69	40	100	35	119.0	100.0	2,50
CSTSCE750N	50	88	50	123	40	149.5	156.0	4,60
CSTSCE763N	63	107	63	145	50	178.0	248.0	9,30
CSTSCE770N	70	115	70	164	55	197.0	315.0	11,25
CSTSCE780N	80	141	80	180	60	231.0	400.0	15,75
CSTSCE790N (1)	90	150	90	226	65	263.0	490.0	24,00
CSTSCE795N (1)	100	170	100	250	70	295.0	610.0	33,95
CSTSCE796N (1)	110	185	110	295	80	332.5	655.0	49,00
CSTSCE797N (1)	125	210	125	360	90	390.0	950.0	81,00

FC = CARICO DINAMICO AMMESSO - MAX DYNAMIC LOAD

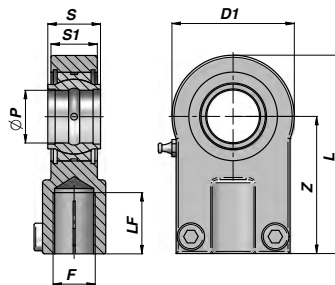
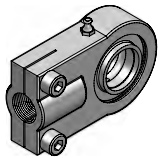
(1) = PANTOGRAFATI - PROFILE PLATE

MATERIALE : ACCIAIO ISO 12240-1 SERIE W

MATERIAL : STEEL ISO 12240-1 SERIES W

CSTAPR...CE

TERMINALE A SNODO RILUBRIFICABILE
BALL-JOINT END WITH GREASE NIPPLE



Codice Code	ØP	Z	S	D1 max	S1 max	L	F	LF min	FC (kN)	kg
*CSTAPR612C	12	38	12	33.0	11.0	54	M12x1,25	17	10.8	0,11
CSTAPR616C	16	44	16	41.0	14.0	64	M14x1,5	19	17.6	0,20
CSTAPR620C	20	52	20	48.0	17.5	77	M16x1,5	23	30.0	0,35
CSTAPR625C	25	65	25	59.5	22.0	96	M20x1,5	29	48.0	0,62
CSTAPR632C	32	80	32	72.0	28.0	118	M27x2	37	67.0	1,15
CSTAPR640C	40	97	40	91.5	34.0	146	M33x2	46	100.0	2,18
CSTAPR650C	50	120	50	110.5	42.0	179	M42x2	57	156.0	3,96
CSTAPR663C	63	140	63	137.5	53.5	213	M48x2	64	255.0	6,80
CSTAPR670C (**)(A)	70	160	70	158.0	58.0	245	M56x2	76	315.0	9,60
CSTAPR680C (**)(A)	80	180	80	171.5	68.0	270	M64x3	86	400.0	13,00
CSTAPR690C (**)(A)	90	195	90	187.0	73.0	296	M72x3	91	490.0	19,10
CSTAPR695C (**)(A)	100	210	100	212.5	85.5	322	M80x3	96	610.0	25,00
CSTAPR696C (**)(A)	110	235	110	237.0	89.0	364	M90x3	106	655.0	32,00
CSTAPR697C (**)(A)	125	260	125	268.0	105.0	406,5	M100x3	113	950.0	46,00

FC = CARICO DINAMICO AMMESSO - MAX DYNAMIC LOAD

(A) = FUORI NORMATIVA - OUT OF RULE

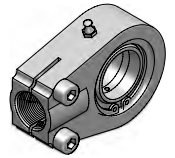
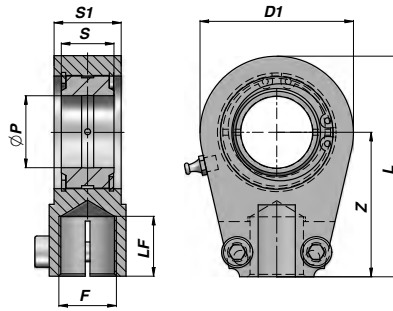
* = NON RILUBRIFICABILE - WITHOUT GREASE NIPPLE

MATERIALE : ACCIAIO DIN 24338 - ISO 6982 - ISO 8132 - (**)= GHISA SFEROIDALE

MATERIAL : STEEL DIN 24338 - ISO 6982 - ISO 8132 - (**)= NODULAR CAST IRON

**TERMINALE A SNODO RILUBRIFICABILE
BALL-JOINT END WITH GREASE NIPPLE**

CSTAPR..U



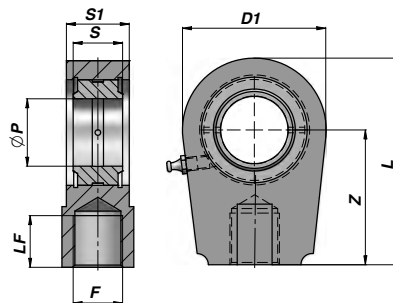
Codice Code	ØP	Z	S	D1 max	S1 max	L	F	LF min	FC (kN)	kg
CSTAPR020U	20	50	16	58.0	19.0	80	M16x1.5	17	30	0,44
CSTAPR025U	25	50	20	58.0	23.5	80	M16x1.5	17	48	0,47
CSTAPR030U	30	60	22	66.0	28.5	94	M22x1.5	23	62	0,77
CSTAPR035U	35	70	25	80.0	30.5	112	M28x1.5	29	80	1,24
CSTAPR040U	40	85	28	96.0	35.5	135	M35x1.5	36	100	2,12
CSTAPR050U	50	105	35	118.0	40.5	168	M45x1.5	46	156	3,74
CSTAPR060U	60	130	44	132.0	50.5	200	M58x1.5	59	245	6,49
CSTAPR070U	70	150	49	157.0	55.5	232	M65x1.5	66	315	9,88
CSTAPR080U	80	170	55	179.0	60.5	265	M80x2	81	400	14,20
CSTAPR090U (**)	90	210	60	208.0	65.5	322	M100x2	101	490	20,00
CSTAPR100U (**)	100	235	70	233.5	70.5	360	M110x2	111	610	27,50
CSTAPR110U (**)	110	265	70	268.0	80.5	407,5	M120x3	125	655	45,60
CSTAPR120U (**)	120	310	85	345.0	90.5	490	M130x3	135	950	72,00

FC = CARICO DINAMICO AMMESSO - MAX DYNAMIC LOAD

MATERIALE : ACCIAIO ISO 12240-1 SERIE W - (**)= GHISA SFEROIDALE
MATERIAL : STEEL ISO 12240-1 SERIES W - (**)= NODULAR CAST IRON

**TERMINALE A SNODO RILUBRIFICABILE
BALL-JOINT END WITH GREASE NIPPLE**

CSTAPR..N



Codice Code	ØP	Z	S	D1 max	S1 max	L	F	LF min	FC (kN)	kg
CSTAPR020N	20	50	16	58.0	19.0	80	M16x1.5	17	30	0,45
CSTAPR025N	25	50	20	58.0	23.5	80	M16x1.5	17	48	0,49
CSTAPR030N	30	60	22	66.0	28.5	94	M22x1.5	23	62	0,76
CSTAPR035N	35	70	25	80.0	30.5	112	M28x1.5	29	80	1,26
CSTAPR040N	40	85	28	96.0	35.5	135	M35x1.5	36	100	2,15
CSTAPR050N	50	105	35	118.0	40.5	168	M45x1.5	46	156	3,80
CSTAPR060N	60	130	44	132.0	50.5	200	M58x1.5	59	245	6,20
CSTAPR070N	70	150	49	157.0	55.5	232	M65x1.5	66	315	9,83
CSTAPR080N	80	170	55	179.0	60.5	265	M80x2	81	400	13,97
CSTAPR090N (**)	90	210	60	208.0	65.5	322	M100x2	101	490	23,50
CSTAPR100N (**)	100	235	70	233.5	70.5	360	M110x2	111	610	32,00
CSTAPR110N (**)	110	265	70	268.0	80.5	407	M120x3	125	655	41,00
CSTAPR120N (**)	120	310	85	345.0	90.5	490	M130x3	135	950	72,00

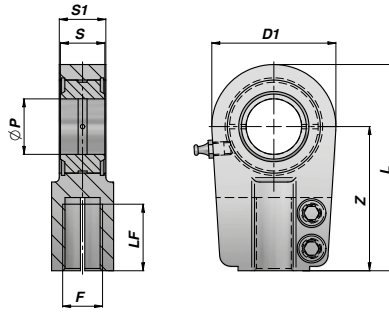
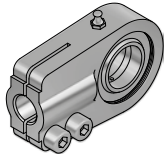
FC = CARICO DINAMICO AMMESSO - MAX DYNAMIC LOAD

MATERIALE : ACCIAIO ISO 12240-1 SERIE E - (**)= GHISA SFEROIDALE
MATERIAL : STEEL ISO 12240-1 SERIES E - (**)= NODULAR CAST IRON

CSTAPR...UGAS

NEW!

**TERMINALE A SNODO RILUBRIFICABILE
BALL-JOINT END WITH GREASE NIPPLE**



Codice Code	ØP	Z	S	D1	S1	L	F	LF min	FC (kN)	kg
CSTAPR025UGAS	25	65	20	56	23	95	M18x2	30	48	0,65
CSTAPR030UGAS	30	75	22	64	28	109	M24x2	35	62	1,00
CSTAPR035UGAS	35	90	25	78	30	132	M30x2	45	80	1,30
CSTAPR040UGAS	40	105	28	94	35	155	M39x3	55	100	2,40
CSTAPR050UGAS	50	135	35	116	40	198	M50x3	75	156	4,10
CSTAPR060UGAS	60	170	44	130	50	240	M64x3	95	245	6,50
CSTAPR070UGAS (**)	70	195	49	154	55	278	M80x3	110	315	9,50
CSTAPR080UGAS (**)	80	210	55	176	60	305	M90x3	120	400	16,00
CSTAPR090UGAS (**)	90	250	60	206	65	363	M100x3	140	490	28,00
CSTAPR100UGAS (**)	100	275	70	230	70	400	M110x4	150	610	34,00
CSTAPR110UGAS (**)	110	300	70	264	80	442	M120x4	160	650	44,00
CSTAPR120UGAS (**)	120	360	85	340	90	540	M150x4	190	950	75,00

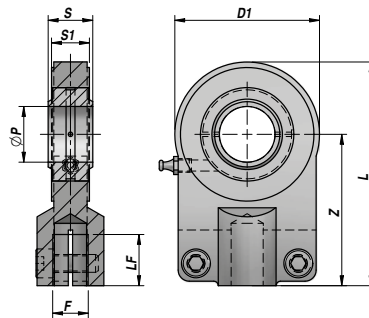
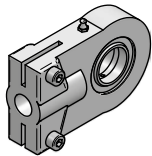
FC = CARICO DINAMICO AMMESSO - MAX DYNAMIC LOAD

MATERIALE : ACCIAIO ISO 12240-1 SERIE E - (**)= GHISA SFEROIDALE
MATERIAL : STEEL ISO 12240-1 SERIES E - (**)= NODULAR CAST IRON

CSTAPR...S

NEW!

**TERMINALE A SNODO RILUBRIFICABILE
BALL-JOINT END WITH GREASE NIPPLE**



Codice Code	ØP	Z	S	D1	S1	L	F	LF min	FC (kN)	kg
*CSTAPR701D	12	42	10	35	8	58	M10x1.25	15	10.8	0,12
**CSTAPR702D (A)	16	48	14	45	11	69	M12x1.25	17	21.1	0,22
**CSTAPR703D	20	58	16	55	13	83	M14x1.5	19	30.0	0,46
CSTAPR704D	25	68	20	65	17	99	M16x1.5	23	48.0	0,67
CSTAPR705D	30	85	22	80	19	123	M20x1.5	29	62.0	1,25
CSTAPR706D	40	105	28	100	23	153	M27x2	37	100.0	2,16
CSTAPR707D	50	130	35	120	30	188	M33x2	46	156.0	3,90
CSTAPR708D	60	150	44	160	38	230	M42x2	57	245.0	7,15
CSTAPR709D (**)	80	185	55	205	46	287.5	M48x2	64	400.0	15,00
CSTAPR710D (**)	100	240	70	240	55	357.5	M64x3	86	610.0	27,30

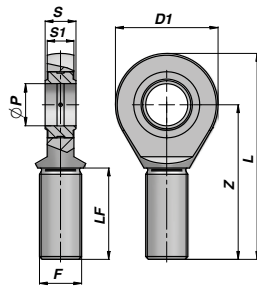
FC = CARICO DINAMICO AMMESSO - MAX DYNAMIC LOAD
(A) = FUORI NORMATIVA - OUT OF RULE

* = NON RILUBRIFICABILE - WITHOUT GREASE NIPPLE
** = RILUBRIFICABILE MEDIANTE FORO - LUBRICATING HOLE IN THE HEAD

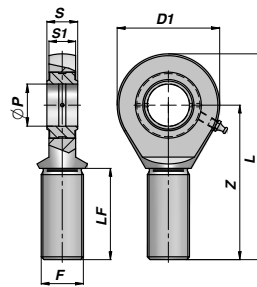
MATERIALE : ACCIAIO DIN 24555 - ISO 8133 - (**)= GHISA SFEROIDALE
MATERIAL : STEEL DIN 24555 - ISO 8133 - (**)= NODULAR CAST IRON

**TERMINALE A SNODO RILUBRIFICABILE
BALL-JOINT END WITH GREASE NIPPLE**

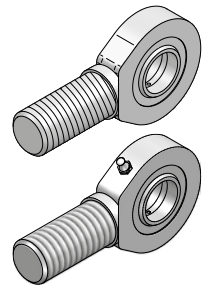
CSTFE...DO



TFE 6-20 DO/D02RS



TFE 25-80 DO/D02RS



Codice Code Type DO	Codice Code Type DO...2RS	ØP	Z	S	D1	S1	L	F	LF min	FC (kN)	kg
*CSTFE906DO		6	36	6	21	4.3	46.5	M6x1	18	3.4	0,01
*CSTFE908DO		8	42	8	24	6.0	54.0	M8x1.25	22	5.5	0,03
*CSTFE910DO		10	48	9	29	7.0	62.5	M10x1.5	27	8.1	0,05
*CSTFE912DO		12	54	10	34	8.0	71.0	M12x1.75	30	10.8	0,08
**CSTFE915DO		15	63	12	40	10.0	83.0	M14x2	34	17.0	0,14
**CSTFE917DO	**CSTFE917D2	17	69	14	46	11.0	92.0	M16x2	36	21.2	0,19
**CSTFE920DO	**CSTFE920D2	20	78	16	53	13.0	104.5	M20x1.5	43	30.0	0,31
CSTFE925DO	CSTFE925D2	25	94	20	64	17.0	126.0	M24x2	53	48.0	0,56
CSTFE930DO	CSTFE930D2	30	110	22	73	19.0	146.5	M30x2	65	62.0	0,89
CSTFE935DO	CSTFE935D2	35	140	25	82	21.0	181.0	M36x3	82	80.0	1,40
CSTFE940DO	CSTFE940D2	40	150	28	92	23.0	196.0	M39x3	86	100.0	1,80
CSTFE945DO	CSTFE945D2	45	163	32	102	27.0	218.0	M42x3	94	127.0	2,60
CSTFE950DO	CSTFE950D2	50	185	35	112	30.0	241.0	M45x3	106	156.0	3,40
CSTFE960DO	CSTFE960D2	60	210	44	135	38.0	277.5	M52x3	115	245.0	5,90
CSTFE970DO	CSTFE970D2	70	235	49	160	42.0	315.0	M56x4	125	315.0	8,20
CSTFE980DO	CSTFE980D2	80	270	55	180	47.0	360.0	M64x4	140	400.0	13,10

FC = CARICO DINAMICO AMMESSO - MAX DYNAMIC LOAD

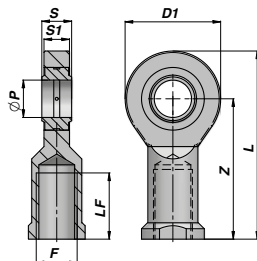
* = NON RILUBRIFICABILE - WITHOUT GREASE NIPPLE

** = RILUBRIFICABILE MEDIANTE FORO - LUBRICATING HOLE IN THE HEAD

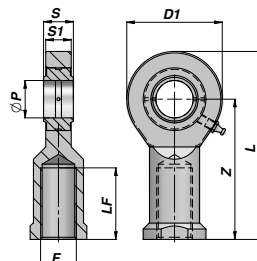
MATERIALE : ACCIAIO ISO 12240-4 SERIE E TIPO M - MATERIAL : STEEL ISO 12240-4 SERIES E TYPE M

**TERMINALE A SNODO RILUBRIFICABILE
BALL-JOINT END WITH GREASE NIPPLE**

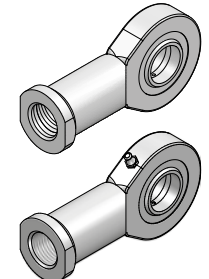
CSTFI...DO



TFI 6-20 DO/D02RS



TFI 25-80 DO/D02RS



Codice Code Type DO	Codice Code Type DO...2RS	ØP	Z	S	D1	S1	L	F	LF min	FC (kN)	kg
*CSTFI806DO		6	30	6	21	4.3	40.5	M6x1	11	3.4	0,02
*CSTFI808DO		8	36	8	24	6.0	48.0	M8x1.25	15	5.5	0,04
*CSTFI810DO		10	43	9	29	7.0	57.5	M10x1.5	20	8.1	0,06
*CSTFI812DO		12	50	10	34	8.0	67.0	M12x1.75	24	10.8	0,09
**CSTFI815DO		15	61	12	40	10.0	81.0	M14x2	30	17.0	0,18
**CSTFI817DO	**CSTFI817D2	17	67	14	46	11.0	90.0	M16x2	34	21.2	0,22
**CSTFI820DO	**CSTFI820D2	20	77	16	53	13.0	103.5	M20x1.5	40	30.0	0,35
CSTFI825DO	CSTFI825D2	25	94	20	64	17.0	126.0	M24x2	48	48.0	0,64
CSTFI830DO	CSTFI830D2	30	110	22	73	19.0	146.5	M30x2	56	62.0	0,93
CSTFI835DO	CSTFI835D2	35	125	25	82	21.0	166.0	M36x3	60	80.0	1,30
CSTFI840DO	CSTFI840D2	40	142	28	92	23.0	188.0	M39x3	67	100.0	2,01
CSTFI845DO	CSTFI845D2	45	145	32	102	27.0	196.0	M42x3	65	127.0	2,50
CSTFI850DO	CSTFI850D2	50	160	35	112	30.0	216.0	M45x3	69	156.0	3,50
CSTFI860DO	CSTFI860D2	60	175	44	135	38.0	242.0	M52x3	73	245.0	5,50
CSTFI870DO	CSTFI870D2	70	200	49	160	42.0	280.0	M56x4	80	315.0	8,60
CSTFI880DO	CSTFI880D2	80	230	55	180	47.0	320.0	M64x4	85	400.0	12,00

FC = CARICO DINAMICO AMMESSO - MAX DYNAMIC LOAD

* = NON RILUBRIFICABILE - WITHOUT GREASE NIPPLE

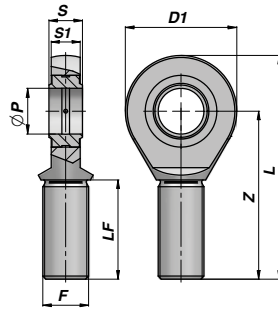
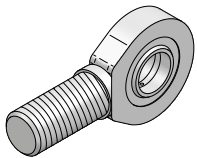
** = RILUBRIFICABILE MEDIANTE FORO - LUBRICATING HOLE IN THE HEAD

MATERIALE : ACCIAIO ISO 12240-4 SERIE E TIPO F - MATERIAL : STEEL ISO 12240-4 SERIES E TYPE F

CSTFE...UK

NEW!

**TERMINALE A SNODO NON RICHIEDENTE MANUTENZIONE
MAINTENANCE FREE BALL-JOINT**



Codice Code Type UK	Codice Code Type UK...2RS	ØP	Z	S	D1	S1	L	F	LF min	FC (kN)	kg
CSTF1106UK		6	36	6	21	4.3	46.5	M6x1	18	3.6	0,01
CSTF1108UK		8	42	8	24	6.0	54.0	M8x1.25	22	5.8	0,03
CSTF1110UK		10	48	9	29	7.0	62.5	M10x1.5	27	8.6	0,05
CSTF1112UK		12	54	10	34	8.0	71.0	M12x1.75	30	11.4	0,08
CSTF1115UK		15	63	12	40	10.0	83.0	M14x2	34	17.6	0,14
CSTF1117UK	CSTF1117U2	17	69	14	46	11.0	92.0	M16x2	36	22.4	0,19
CSTF1120UK	CSTF1120U2	20	78	16	53	13.0	104.5	M20x1.5	43	31.5	0,31
CSTF1125UK	CSTF1125U2	25	94	20	64	17.0	126.0	M24x2	53	51.0	0,56
CSTF1130UK	CSTF1130U2	30	110	22	73	19.0	146.5	M30x2	65	65.5	0,89
	CSTF1135U2	35	140	25	82	21.0	181.0	M36x3	82	112.0	1,40
	CSTF1140U2	40	150	28	92	23.0	196.0	M39x3	86	140.0	1,80
	CSTF1145U2	45	163	32	102	27.0	218.0	M42x3	94	180.0	2,60
	CSTF1150U2	50	185	35	112	30.0	241.0	M45x3	106	220.0	3,40
	CSTF1160U2	60	210	44	135	38.0	277.5	M52x3	115	345.0	5,90
	CSTF1170U2	70	235	49	160	42.0	315.0	M56x4	125	440.0	8,20
	CSTF1180U2	80	270	55	180	47.0	360.0	M64x4	140	570.0	12,00

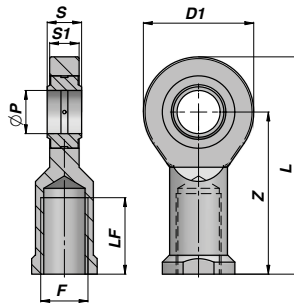
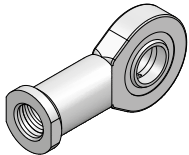
FC = CARICO DINAMICO AMMESSO - MAX DYNAMIC LOAD

MATERIALE : ACCIAIO ISO 12240-4 SERIE E TIPO M
MATERIAL : STEEL ISO 12240-4 SERIES E TYPE M

CSTFI...UK

NEW!

**TERMINALE A SNODO NON RICHIEDENTE MANUTENZIONE
MAINTENANCE FREE BALL-JOINT**



Codice Code Type UK	Codice Code Type UK...2RS	ØP	Z	S	D1	S1	L	F	LF min	FC (kN)	kg
CSTF1006UK		6	30	6	21	4.3	40.5	M6x1	11	3.6	0,02
CSTF1008UK		8	36	8	24	6.0	48.0	M8x1.25	15	5.8	0,04
CSTF1010UK		10	43	9	29	7.0	57.5	M10x1.5	20	8.6	0,06
CSTF1012UK		12	50	10	34	8.0	67.0	M12x1.75	24	11.4	0,09
CSTF1015UK		15	61	12	40	10.0	81.0	M14x2	30	17.6	0,18
CSTF1017UK	CSTF1017U2	17	67	14	46	11.0	90.0	M16x2	34	22.4	0,22
CSTF1020UK	CSTF1020U2	20	77	16	53	13.0	103.5	M20x1.5	40	31.5	0,35
CSTF1025UK	CSTF1025U2	25	94	20	64	17.0	126.0	M24x2	48	51.0	0,64
CSTF1030UK	CSTF1030U2	30	110	22	73	19.0	146.5	M30x2	56	65.5	0,93
	CSTF1035U2	35	125	25	82	21.0	166.0	M36x3	60	112.0	1,30
	CSTF1040U2	40	142	28	92	23.0	188.0	M39x3	67	140.0	2,01
	CSTF1045U2	45	145	32	102	27.0	196.0	M42x3	65	180.0	2,50
	CSTF1050U2	50	160	35	112	30.0	216.0	M45x3	69	220.0	3,50
	CSTF1060U2	60	175	44	135	38.0	242.0	M52x3	73	345.0	5,50
	CSTF1070U2	70	200	49	160	42.0	280.0	M56x4	80	440.0	8,60
	CSTF1080U2	80	230	55	180	47.0	320.0	M64x4	85	570.0	12,00

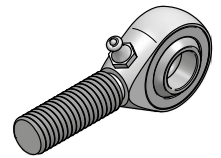
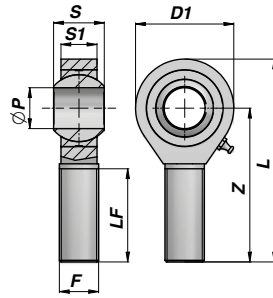
FC = CARICO DINAMICO AMMESSO - MAX DYNAMIC LOAD

MATERIALE : ACCIAIO ISO 12240-4 SERIE E TIPO F
MATERIAL : STEEL ISO 12240-4 SERIES E TYPE F

**TERMINALE A SNODO RILUBRIFICABILE
BALL-JOINT END WITH GREASE NIPPLE**

NEW!

CSTFE...PB



Codice Code	ØP	Z	S	D1	S1	L	F	LF min	FC (kN)	kg
CSTF1235PB	5	33	8	16	6.0	41	M5x0.8	20	3.3	0,01
CSTF1236PB	6	36	9	18	6.7	45	M6x1	22	4.3	0,01
CSTF1237PB	8	42	12	22	9.0	53	M8x1.25	25	6.8	0,03
CSTF1238PB	10	48	14	26	10.5	61	M10x1.5	29	10.0	0,08
CSTF1239PB	12	54	16	30	12.0	69	M12x1.75	33	13.0	0,12
CSTF1240PB	14	60	19	34	13.5	77	M14x2	36	17.0	0,14
CSTF1241PB	16	66	21	38	15.0	85	M16x2	40	21.0	0,22
CSTF1242PB	18	72	23	42	16.5	93	M18x1.5	44	26.0	0,32
CSTF1243PB	20	78	25	46	18.0	101	M20x1.5	47	31.0	0,43
CSTF1244PB	22	84	28	50	20.0	109	M22x1.5	51	38.0	0,61
CSTF1245PB	25	94	31	60	22.0	124	M24x2	57	47.0	0,81
CSTF1247PB	28	103	35	66	25.0	136	M27x2	62	59.0	1,20
CSTF1246PB	30	110	37	70	25.0	145	M30x2	66	63.0	1,40

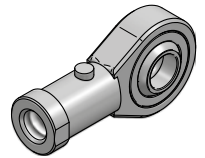
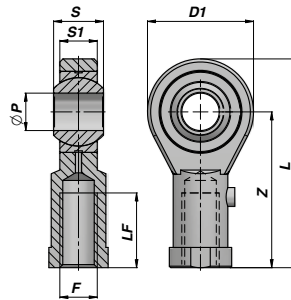
FC = CARICO DINAMICO AMMESSO - MAX DYNAMIC LOAD

MATERIALE : ACCIAIO ISO 12240-4 SERIE K - ISO 6126
MATERIAL : STEEL ISO 12240-4 SERIES K - ISO 6126

**TERMINALE A SNODO RILUBRIFICABILE
BALL-JOINT END WITH GREASE NIPPLE**

NEW!

CSTFI...PB



Codice Code	ØP	Z	S	D1	S1	L	F	LF min	FC (kN)	kg
CSTF1205PB	5	27	8	16	6.0	35	M5x0.8	14	3.3	0,01
CSTF1206PB	6	30	9	18	6.7	39	M6x1	14	4.3	0,01
CSTF1208PB	8	36	12	22	9.0	47	M8x1.25	17	6.8	0,03
CSTF1210PB	10	43	14	26	10.5	56	M10x1.5	21	10.0	0,08
CSTF1212PB	12	50	16	30	12.0	65	M12x1.75	24	13.0	0,12
CSTF1214PB	14	57	19	34	13.5	74	M14x2	27	17.0	0,14
CSTF1216PB	16	64	21	38	15.0	83	M16x2	33	21.0	0,22
CSTF1218PB	18	71	23	42	16.5	92	M18x1.5	36	26.0	0,32
CSTF1220PB	20	77	25	48	18.0	100	M20x1.5	40	31.0	0,43
CSTF1222PB	22	84	28	50	20.0	109	M22x1.5	43	38.0	0,61
CSTF1225PB	25	94	31	60	22.0	124	M24x2	48	47.0	0,81
CSTF1228PB	28	103	35	66	25.0	136	M27x2	53	59.0	1,20
CSTF1230PB	30	110	37	70	25.0	145	M30x2	56	63.0	1,40

FC = CARICO DINAMICO AMMESSO - MAX DYNAMIC LOAD

MATERIALE : ACCIAIO ISO 12240-4 SERIE K - ISO 6126
MATERIAL : STEEL ISO 12240-4 SERIES K - ISO 6126